

# Fiskerton Parish News

## Christmas Tree Spectacular

St. Clement's Church, Fiskerton

Sat. Sun. December  
12th/13th. 19th/20th.

11am - 4.30pm  
each day



*To be opened by Judy Theobald  
of BBC Radio Lincs.  
11am Sat. 12th.*

*Decorated trees by  
Village organisations*

*Grand  
Raffle*

*Homemade Preserves for Sale*

*Mulled wine & Mince Pies*

*Live Music both  
weekends*

# December 2009

## **BISHOP'S LETTER FOR PARISH MAGAZINES: DECEMBER 2009**

### **Christian – and Proud of It!**

“It doesn't matter what you believe, so long as you believe it doesn't matter”.

That is one way of summarising current attitudes to strongly held beliefs and opinions. They are treated with a great deal of suspicion, because these days one person's point of view is as good as any other.

However, it is perfectly possible to have strong convictions without becoming aggressively dogmatic or lacking in tolerance.

As a Christian, I am convinced that God in Christ has changed how we can make sense of the way the world is, and what it means to be human. Love is God's meaning, and life in all its fullness is God's will for all creation. Christmas marks a critical turning point in the evolution of God's human project. The hinge of history is on a stable door in Bethlehem .

So let us be bold in our sharing of God's good news with an increasingly credulous world. We can do it using words, but St. Augustine was right to urge us to do that only if absolutely necessary. Most important are our attitudes and actions which tell others more about what really matters to us and motivates us than words ever can.

And this Christmas let us make a special effort to use the power of symbols to let people know what we believe – and that what we believe really matters. Wearing a Cross prominently, displaying a Christmas poster in our front window, making sure our Christmas decorations convey clear Christian messages – all these and other ways can counter attempts to reduce Christmas to a feasting with no real sense of what we are feasting for.

A fish symbol on your lapel or on your car can prompt a question about what it means (the Greek word for fish is ichthus which is made up of the initial letters of the Greek for Jesus Christ Son of God Saviour). A Christmas Card which actually conveys a Christian message can provide a gentle reminder of what this season is really all about.

Symbols will be clashing all around us this Christmas, so let us make sure that the symbols of our faith are clearly to the fore.

May I take this opportunity to wish you all a very blessed Christmas, as the Christ Child is once again born into our lives and the lives of those we love.

+ John Lincoln

#### **To arrange Baptisms, Weddings or Funerals please contact:-**

Revd. Sue Bradley (Associate Priest)	17 Holly Close, Cherry Willingham	01522 750292
Revd. Peter Collins (Curate)	The Rectory, Reepham Rd. Fiskerton	01522 750091
Revd. Carol Bason (Assistant Curate)	15 Church Lane, Reepham	01522 753282

Churchwardens:	Mrs F.Styles	Elveden,	Lincoln Rd.	Fiskerton	01522 750690
	Mrs L. Forman	Applegarth,	Ferry Road	Fiskerton	01526 398316

Church Key also available from: Mrs M Gibson, 14 Ferryside Gardens 01522 752117

Benefice Website: [www.lincoln.ourchurchweb.org.uk/southlawres](http://www.lincoln.ourchurchweb.org.uk/southlawres)

**A Christmas Study Day on Saturday 5 December** with Revd Canon Trevor Dennis, Vice-Dean of Chester Cathedral. **"The Christmas Stories"** 10am-3pm at All Saints Church, Nettleham Bring a Packed Lunch and a Pencil! Tea and coffee provided No charge - donations to cover costs welcome. For more information contact the Revd Jenny Rowley on 01522 754752

**CHURCH SERVICES for The South Lawres Benefice:****December 2009****6<sup>th</sup>. 2<sup>nd</sup>. Sunday of Advent**

8am Holy Communion at Cherry Willingham  
**9.15am Holy Communion at Fiskerton**  
 9.15am Morning Worship at Reepham

**13<sup>th</sup>. 3<sup>rd</sup>. Sunday of Advent**

8am Morning Worship at Cherry Willingham  
 9.15am Holy Communion at Reepham  
**9.15am Morning Worship at Fiskerton**  
 10.45am Holy Communion at Cherry Willingham  
 6pm Combined Anglican & Methodist Churches Carol Service at Reepham  
 6.30pm Compline at Cherry Willingham

**18<sup>th</sup>. Friday**

7.30pm Village Carol Service at Cherry Willingham

**19<sup>th</sup>. Saturday**

3.00pm Christingle Service at Reepham

**20<sup>th</sup>. 4<sup>th</sup>. Sunday of Advent**

8am Holy Communion at Cherry Willingham  
**9.15am Holy Communion at Fiskerton**  
 9.15am Family Worship at Reepham  
 10.45am Holy Communion at Cherry Willingham

**24<sup>th</sup>. Christmas Eve**

3pm Crib Service at Reepham  
 3.30pm Crib Service at Cherry Willingham  
**6pm Carol Service at Fiskerton**  
 11.30pm Holy Communion at Reepham  
 11.30pm Holy Communion at Cherry Willingham

**24<sup>th</sup>. Christmas Day**

9.15am Holy Communion at Cherry Willingham

**27<sup>th</sup>. 1<sup>st</sup>. Sunday of Christmas**

10am Combined Holy Communion Service at Cherry Willingham

**PLEASE NOTE:**

*There will be no services at All Saints Greetwell in December 2009 and January 2010*

**St. Clement's Church: Service Rotas:**

Dec	Sidesman	Reader	Intercessions	Cleaning
6 <sup>th</sup> .	Mrs J Lunn	Mrs A Townsend <b>Malachi 3: 1 - 4</b>	Mrs L Forman <b>The Crescent</b>	Mrs F Styles
13 <sup>th</sup> .	Mrs R Walkinton	Mrs L Forman <b>Zeph. 3: 14 - end</b>	Mrs G Walkinton <b>High Street</b>	
20 <sup>th</sup> .	Mrs G Walkinton	Mrs I Taylor <b>Micah 5: 2 - 5</b>	CLERGY <b>Pre-School</b>	Mrs M Broad
24 <sup>th</sup> .	Mrs F Styles & Mrs L Forman			

**Other Church news:**

**Lottery Draw:** The November numbers were drawn at The Fiskerton Quiz.

£25: Number 44: Mrs M Gibson

£10: Number 10: Mr & Mrs C Scott

£5: Number 4: Mr A Gibson

£5: Number 31: Mrs J Hoe

The December Numbers will be drawn during the first weekend of the Christmas Tree Spectacular.

**THE FRIENDS OF ST. CLEMENT'S CHURCH: FISKERTON**

Almost one year has passed since we formed the 'Friends of St. Clement's. This has proved to be very successful, greatly beneficial and much appreciated by the PCC of Fiskerton Church. It has enabled us to carry out some necessary and urgent maintenance work and a number of improvements to our lovely church.

If you are not already a 'Friend' and would like to support us in 2010, payment is £24 for the year or £12 for 6 months. This entitles you to 12 lottery draws (one a month) with prize money of £25, £10 and 2 X £5.

To enrol as a Friend, please contact me - Tel: 750690 before January 3<sup>rd</sup>. 2010 (or talk to any member of the PCC). I look forward to receiving your call. Thank you. Freda Styles

**THANKS:** St. Clement's Church is grateful for the following donations to the cost of the Newsletter and to Church Funds:- The Carpenter's Arms - £49, Wishing Well Stores - £10, Anon - £10 and Anon - £15.50

**Funeral:** A past resident of Fiskerton - Vera Laura Robinson, sadly passed away in October. There was a short Funeral Service and interment in Fiskerton Churchyard.

**Village Calendars:** These have been selling very well. If you have not yet bought yours, then please contact Lynda Forman (details at the end of this Newsletter) Or they are now for sale at the Post Office - £4.50 each. If any are left, they will be on sale at The Christmas Tree Spectacular, but can you take that chance.....?

## What's On in December    *In The Village.....*



Fiskerton Village Hall invites ALL CHILDREN aged 11 years and below to....

### THE FISKERTON CHRISTMAS PARTY

**Saturday December 5<sup>th</sup>. 4pm – 6pm**

Tickets 50p per child (includes nibbles). Children must be accompanied by an adult  
(*A Little Elf tells me that Santa may visit*)

**This will be followed at 6pm by.....**

### The Lighting of The Village Christmas Tree

Come and start the Festive Season with carols and a mince pie around the tree at Fiskerton Village Hall



'VISION' is a group of Christians meeting in Fiskerton who believe worship of God needs to be relevant, not religious. Come and join us in a Carol Service – that is more celebration than service - at Fiskerton Village Hall.

Hear (and sing) carols old and new, hear stories told and enjoy a video clip plus more. All is free, with free refreshments after.

**Sunday December 6<sup>th</sup>. from 6pm – 7pm**

**Luncheon Club:** Why not join us for a delicious home cooked two -course meal every other Tuesday in the Village Hall? It will only cost you £3.00  
The date for **December** is **Tuesday 8<sup>th</sup>**. Ring Mary on 595291 to book.



FISKERTON C.E. PRIMARY SCHOOL P.T.A  
CHRISTMAS FAIR & CAROLS WITH THE SALVATION ARMY BAND  
THURSDAY 10 DECEMBER 6PM

TOMBOLA      RAFFLE      GAMES      CHRISTMAS GIFTS  
ARTS WORKSHOP      MULLED WINE & MINCE PIES  
SANTA'S GROTTO      CAKE STALL      AND LOTS MORE!!!

ENTRANCE £1 ADULTS 50P CHILDREN

INCLUDES A DRINK & MINCE PIE

(TABLES AVAILABLE FOR A DONATION OF A RAFFLE PRIZE  
PLEASE CONTACT THE SCHOOL 01522 751049)



#### **Fiskerton W.I:**

The Christmas meeting takes place on **Thursday 10<sup>th</sup>. December** the evening is called 'Ladies Who Lunch'. This is a meeting where members may invite guests to attend and there will be a light supper to follow the talk.  
It all begins at 7.30pm in Fiskerton Village Hall.

# Christmas Open Day at 27 Ferry Road

On Saturday 12<sup>th</sup> December, we will be opening our house to all in Fiskerton and surrounding area. The idea is that you can drop in at any time between 10 am and 4 pm to sit and relax, chat and put aside the pressures and worries of the Christmas season! Have a natter - get to know your neighbours! Do a jigsaw! Why not drop in on your way to or from St Clements Christmas Tree Spectacular?

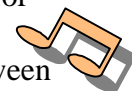
There will be tea, coffee and squashes, biscuits and maybe a few mince pies available. Christmas songs in the background, even Christmas songs to sing along to if you want! Games for the children.

There won't be any charge, any sales, any charities, any pressure to join anything or any requests for donations!

You can come and go as you please, stay for as long (or short) as you like - provided that it is between 10 am and 4 pm.! All welcome.

Just come along and relax.

Peter and Marion



## CHRISTMAS TREE SPECTACULAR:



During both weekends there is a small programme of events.

Saturday Dec. 12<sup>th</sup>. - 11am Grand Opening by Judy Theobald  
11.15am (approx.) Festive Singing by the children of the Primary School

11.30am (approx) Organ Music from John Towle  
2pm Organ Music from Marion Rance

Saturday Dec. 19<sup>th</sup>. - 11.30 seasonal music and singing by 'Spirit'  
2pm Presentation of prizes to Calendar Photograph Winners  
2.15 seasonal music and singing by 'Spirit'

*We look forward to seeing you over the 2 weekends*

## The Carpenters Arms Christmas Quiz



**Monday 21<sup>st</sup>. December 8pm start  
BIG CASH PRIZE, SPECTACULAR RAFFLE**

**CHARITY DONATION TO  
THE AIR AMBULANCE & LIVES**



**FREE BUFFET**

**MAX TEAMS OF 4 & ONLY £1 PER PERSON ENTRY**

**COME ALONG & JOIN IN THE FUN & HELP RAISE FUNDS FOR CHARITY &  
WIN! WIN! WIN!**

\*\*\*\*\*



**Wishing Well Stores  
wish all our customers  
a very happy christmas and prosperous 2010.....**



**we have made a donation to the Parish News this year instead of sending christmas cards...**

**PARISH COUNCIL NEWS**

**Summary of meeting – 26<sup>th</sup> October, 2009**

**The Clerk was asked to contact:**

- Ø LCC Highways about continued flooding outside 27 Ferry Road , the condition of Ferry Road from Ridings Close to Hall Lane and speeding traffic near the Church
- Ø The Road Safety Partnership about speeding traffic near the Church
- Ø Anglian Water about a dangerous hydrant cover outside 3 Hall Court and to ask if they can clarify what is needed re drainage on the Chapel Rise estate
- Ø CC Footpaths about the overgrown public footpath from Plough Lane to Cherry Willingham
- Ø Lincolnshire Police about bad behaviour on Holmfield
- Ø WLDC Planning Enforcement Officer re continued use of quad bike track
- Ø Flood Mitigation Scheme – the outstanding CCTV survey has been completed and the results are being considered by WLDC. There is concern over the legal implications of the Parish Council putting in planning permission and legal advice will be sought on where the Council stands if properties are flooded.
- Ø LCC Footpaths Section has no plans at present to cut steps into the riverbank; however any improvement may be looked at in the future in conjunction with the Environment Agency. The public footpath behind Primetake is to be mown and any further clearing work is to be investigated.
- Ø Date of Next Meeting: Monday, 7<sup>th</sup> December, 2009 at 7.30 p.m.

**VILLAGE HALL BOOKINGS for DECEMBER:**

Monday	7 <sup>th</sup> . 14 <sup>th</sup> . 21 <sup>st</sup> .	Cheeky Monkeys	9.30am – 11.30am
Monday	7 <sup>th</sup> .	Parish Council	7.30pm – 9pm
Tuesday	1 <sup>st</sup> . 8 <sup>th</sup> . 15 <sup>th</sup> . 22 <sup>nd</sup> . 29 <sup>th</sup> .	Tai Kwon Do	7pm – 9.30pm
Tuesday	8 <sup>th</sup> .	Luncheon Club	10am – 2pm
Tuesday	8 <sup>th</sup> .	Kids Club	3.45pm – 5.30pm
Wednesday	2 <sup>nd</sup> . 9 <sup>th</sup> . 16 <sup>th</sup> .	Computer Classes	1pm – 3pm & 7pm – 9pm
Thursday	3 <sup>rd</sup> . 10 <sup>th</sup> . 17 <sup>th</sup> . 24 <sup>th</sup> .	Aerobics	10am – 11am
Thursday	10 <sup>th</sup> .	W I	7pm – 9.30pm
Thursday	24 <sup>th</sup> .	Private Party	1.30pm – 3.30pm
Thursday	31 <sup>st</sup> .	New Year’s Eve Party	7.30pm – midnight (adults only)
Friday	4 <sup>th</sup> . 11 <sup>th</sup> . 18 <sup>th</sup> .	Bingo/ Social	7.30pm – late
Saturday	5 <sup>th</sup> .	Children’s Party	4.00pm – 8pm
Saturday	12 <sup>th</sup> .	Sati Group	9.30am – 4.30pm
Saturday	19 <sup>th</sup>	Private Party	7.30pm – midnight
Saturday	26 <sup>th</sup> .	Private Party	10am – midnight
Sunday	6 <sup>th</sup> .	Private Party	10.30am – 4.30pm
Sunday	6 <sup>th</sup> .	Carol Service	5.30pm – 7.3-pm
Sunday	13 <sup>th</sup> .	Causeway Projects	2.15pm – 4.45pm
Sunday	20 <sup>th</sup> .	Vine Church	9am – 1.45pm
Sunday	20 <sup>th</sup> .	Private Party	3pm – 7pm

To make a booking or check availability please contact:- Booking Secretary – Jenny Hayes on 07510281232

\*\*\*\*\*



**Fiskerton Post Office:**

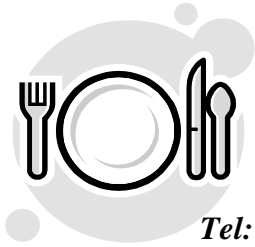
Opening Hours: Mon. 9am – 2pm Tues. 9.30am – 1.30pm  
Thurs 9.30am – 1.30pm

Derek would like to thank everyone for their support in 2009. But we cannot take our Post Office for granted, it really is a ‘Use it or Lose it’ situation these days. Don’t forget, you can buy stationary items, cards,

calendars and other items as well as use the Postal Services. Your continuing support is vital in the coming year. Thank you.

## What's On in December    *In The Area.....*

**LADIES' BREAKFAST** - 8:45 for 9:00am on Saturday 5<sup>th</sup> Dec. '09  
at 'Rosie Lea Café', The Parade, Cherry Willingham    Cost: £5



- ♥ all ladies welcome
- ♥ make new friends
- ♥ enjoy a full English breakfast [*alt. available*]
- ♥ listen to a short talk by a Christian speaker.

*Tel: Ann: 01522 800209 or Jan: 01522 753432 to book a place, by Weds. 2<sup>nd</sup> Dec.  
N.B. No breakfast meeting in January 2010*

### Natural and Re-cycled Christmas decorations

Saturday December 5<sup>th</sup>. 10am – noon at Chambers Farm Wood.

Have a go at making your own decorations. Great fun, but be prepared to get a little gluey! Booking essential. £1 per child – accompanying adult free. Suitable for age 6 and over. Tel: 01526 399943 to book



### FAIRTRADE COFFEE MORNING:

The Charity and Fairtrade Coffee Morning will take place in Cherry Willingham Church Hall on **Saturday Decdember 12<sup>th</sup>**. from 10am – 11.30am. All proceeds from the refreshments and raffle go to a chosen charity and the there will be a Traidcraft stall.



### Reepham Methodist Church Coffee Morning:

Come and Join us for coffee and cake at The Methodist Church Hall in Reepham on **Saturday December 19<sup>th</sup>**. from 10am – 11.30am.. There is no charge, but donations will go to Charity.

### The Vine Community Church



### Invitation to our Christmas Celebration

Sunday 20<sup>th</sup> December 11am    Fiskerton Village Hall  
Packed full with Christmas Carols, Sketches, Songs,  
Mince pies and other Christmas goodies !

For more details, tel.01522 872011 or just come along on the day!

[www.thevinecommunitychurch.org.uk](http://www.thevinecommunitychurch.org.uk)

***Come and enjoy traditional carols celebrating the true meaning of Christmas  
Tuesday 22<sup>nd</sup> December at 7.30pm    Carols on the Green    The Parade , Cherry  
Willingham. Band of musicians and singers, Free Mulled Wine and Mince Pies  
(Bring your lantern or torch if you have one)***



**THANKS:**



**Cynthia Overton would like to thank all those who supported the 'Open Doors Tea Party'. A wonderful £100 was raised.**

### **Nettleham & Cherry Willingham Surgeries**

#### **Seasonal flu vaccinations**

Our flu clinics have been running for several weeks now. If you have not had your flu vaccination yet and fit into one of the categories below, please contact the practice to make an appointment as soon as possible.

Aged 65 or over      Have Chronic Liver Disease      Have Chronic Heart Disease  
Have Chronic Respiratory Disease (including Asthma when regularly using an inhaled steroid)  
Have Chronic Renal Disease      Have Diabetes      Have Suppressed Immune Systems  
Are a Carer      Have Multiple Sclerosis

#### **Swine flu update**

We are expecting our first delivery of swine flu vaccinations in the next week or two. We are planning on starting our clinics towards the end of November on a Saturday morning.

Patients will be vaccinated in the following priority as per the Department of Health guidelines. If you fall into the first category, please contact the practice to book an appointment from mid November. If you fall into any of the other categories please contact us from mid December onwards as we should know by then our delivery schedule and will have more details about future swine flu clinics.

- Under 65s (six months upwards) in "at risk" groups
- Pregnant women
- Household contacts of immunocompromised individuals
- Over 65s in "at risk" groups

#### **Midwife**

The practice is delighted to congratulate our midwife, Mrs Nicky Kirk, who is the runner up in the midwife of the year competition. It is a very big honour to be recognised, particularly as the results are determined by patients nominating their midwife. Well Done Nicky!

#### **New to the area?**

If you have recently moved into the area don't forget to register with a Doctor, even if you don't think you will need one. That way your previous health records will be available if you do need medical help.

#### **Season's Greetings**

On behalf of everyone at the Practice I would like to

wish everyone a very happy Christmas and a peaceful New Year.



**Manor Farm Holiday Lodges**  
Stainfield, Market Rasen, Lincolnshire. LN8 5JJ

**Need somewhere local for family or friends coming to stay??**

Our self catering, luxury pine lodges surround a fishing lake in a quiet, tranquil setting on part of our farm, 8 miles east of Lincoln.

**Tel: 01526 398492 / 07712 771102**

**E-mail: katie@ruralroosts.co.uk**

#### **Perfect NAILS in your own home!!**

- Mobile nail technician
- Bio Sculpture Gel
- Beautiful Colours, clear or French Manicure
- Fully qualified to BTEC in Beauty Therapy

**For an appointment call Sarah on**

**01522 754346**

**Or**

**07595386018**



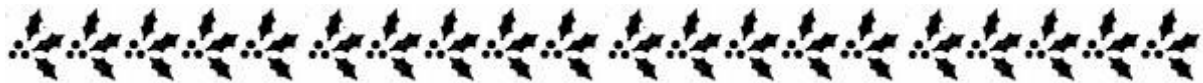
### **LIVES (Group 26 Cherry Willingham)**

Thanks to the assistance and donations from many people in the area, your local LIVES team is now well established and available to respond to medical emergencies as tasked by EMAS control in the vicinity of Cherry Willingham, Reepham, Fiskerton and Sudbrooke with cover being provided almost round the clock. The group continues to expand as more people volunteer for basic training. Also existing members are receiving additional training so they can respond to a wider variety of calls.

During the summer the call rate was low but unfortunately with the onset of winter the number of calls is as usual on the increase. So with your help, we will be there for you when you most need us. Our aim is to be first on scene and provide essential patient care until the arrival of the ambulance service.

May I take this opportunity to thank all those persons who have supported us both financially and in kind during the past 12 months because without that support we would cease to exist. Remember all funds raised locally contribute directly to our ongoing operational costs. I trust you will all have a happy Christmas and a healthy New Year and I look forward to reporting on developments in 2010.

Phil Staples (Group Coordinator)



**PLEASE NOTE: All items for inclusion in the January 2010 Newsletter MUST be with the Editor by DECEMBER 14<sup>th</sup>. 2009**

**Newsletter Information:** Please note that items for inclusion in the Parish News can be handed in at Wishing Well Stores. Items can also be posted to Mrs L.Forman, 'Applegarth', Ferry Rd. Fiskerton, Lincoln LN3 4HU or please telephone 01526 398316.

You can e-mail items to [fiskertonnews@btinternet.com](mailto:fiskertonnews@btinternet.com)



*Thank you for reading and supporting your Village newsletter during 2009.  
Everyone connected with St. Clement's Church wishes you a very happy  
Christmas and a peaceful New Year.*

**How will you celebrate Christmas ?**

What a wonderful time of year as we look forward to Christmas. Good wishes, Christmas cards, gifts, presents still to buy, several to wrap and hopefully, some to receive. This is a giving time, a sharing time, a time of too much good food and maybe an extra glass ! . . . . and a time to reflect on the real meaning of this special season. That may be a traditional view, but for some - times can be very different.

Some volunteers will celebrate by giving up their Christmas dinner, ( *well, they may have a minced pie and an extra cup of coffee* ), but they will be sitting comfortably by the telephone - waiting for it to ring. Sometimes there may be long gaps, sometimes several calls close together. Some calls may have long silences, some may be tearful, even angry or very lonely, some in complete despair, some wishing to end their life. ***How will you celebrate Christmas ?***

Samaritans treat all the calls they receive in complete confidence. Volunteers have no facilities to trace a caller, or even to know which part of the country they are from, and a caller does not have to give a name, but we can share part of a story about Mary, not a Mary you know, not the Mother of Jesus, but Mary who phoned Samaritans in the middle of the night.

A few years ago she was starting to look forward to another Christmas with her husband. In October, he was diagnosed with a terminal illness and by December his health had rapidly deteriorated. After a few weeks in hospital he came home for what they both knew would be a final time together. ***How will you celebrate Christmas ?***

Mary and her husband had a quiet Christmas that year, sitting together and reflecting on many Christmases past. They started a "happy new year" together, but it only lasted for a few weeks. . . .

For Mary, the days and nights became very long. She had no family, friends were old, neighbours led busy lives. The photographs in the album became faded like the memory of some of the people. In some of the pictures, the people were so blurred by the tears in her eyes, that she had difficulty making out who they were. Yet her Doctor, the Vicar, the Postman, the newsagent and a few of the neighbours, all asked "How are you ?" and Mary always replied "I'm alright, thank you" ***How will you celebrate Christmas ?***

Christmas for Mary is no longer for celebrating. She didn't send cards any more - it seemed so hard to write just her own name. She received some cards over the years but the numbers seemed to get less until last Christmas - when nothing came through her letterbox. No cards, no tree, no decorations, no turkey, just the same jingle bell music spilling out of the radio instead of her favourite programmes. The TV was full of everyone enjoying themselves and adverts full of jolly Christmas bargains that she didn't want. ***How will you celebrate Christmas ?***

Mary turned off the TV and went to bed - but sleep would not come - only memories - and some were very sad. At 2.30am. she got up and went to make a cup of tea. As she sat at her table she noticed the old newspapers ready for recycling. She had read them all, but now suddenly, a telephone number seemed to stand out from all the other newsprint and there was a name - "SAMARITANS 24 hours".

Mary looked closely at the number and then at her telephone . . . and stared at them alternately for a long time. Memories from the past and her current situation seemed all mixed up. Very slowly pressed the buttons - it rang a few times before a calm voice answered. She listened but couldn't respond, her brain knew the words . . . but her lips wouldn't move. She put the 'phone down and just stared at it. ***How will you celebrate Christmas ?***

Somehow, Mary found the courage to ring the number again. At first, she felt strange - there were some long pauses, but slowly and surely she was able to tell this story and share those feelings that she had never been able to put into words before. She no longer felt the need to put on a brave face and pretend "I'm alright, thank you". The volunteer who answered her call, didn't say very much, but Mary knew they were really listening and she felt very comfortable talking to a stranger who didn't know her. She talked for a long time and found that, even through the tears, it became easier to really talk about how she felt.

Mary was quite surprised when asked if she had ever thought about ending her life. Surely, that wasn't part of any normal conversation, but she had never had an opportunity before to explore those thoughts and feelings. It was a long time since she had talked so much. She felt quite tired. In some ways, she felt that she wanted to talk forever to make up for the years of isolation. Perhaps a fresh cup of tea might be the best thing and then some rest before the birds started to sing.

Just before her call ended, Mary was surprised to be asked if she would like a call back sometime tomorrow, just to see if Boxing Day would be any better. She could not remember the last time that she had expected a 'phone call. Was it something to look forward to?

***How will you celebrate Christmas ?***

Is there a Mary or a John who live near to you ? Would they like a card at Christmas ? Could you ask if they are "alright" ? Lincoln Samaritans need your help in this community Could you give some time ? Could you give some extra money ?

It takes some serious money to provide a 24 hour service like Samaritans. The building, heating and lighting, the telephone lines (*and not forgetting supplies of tea and coffee*) amount to £70 every day ***How will you celebrate Christmas ?*** If you are not able to give some special time to another at the moment - Are you able to give to help others to carry on their work. Your kindness will be so much appreciated

***However you celebrate Christmas -SAMARITANS wish you a very happy one Thank you***

*If you ever feel the need to talk . . .SAMARITANS available 24 hours 365 days*

**01522 52 82 82 or 08457 90 90 90** email:[jo@samaritans.org](mailto:jo@samaritans.org) web: [www.samaritans.org](http://www.samaritans.org)

write: Chris, PO Box 90 90 Stirling FK8 2SA Donations & to visit:17 Hungate, Lincoln LN1 1ES