

### **Vicars Blog :**

Lots of people have asked me, so I will just report on my trip to Westminster Hall for the Queen's Jubilee lunch. First of all, it was a huge privilege to be there, and to be there with a group of lovely people all of whom were supported in one way or another by The Mercers Company, so for example, a 74 year old woman who sat next to me lives in one of the almshouses built by The Mercers, a young man who was studying singing at the Guild Hall School of Music, a Youth Leader working in the East End of London and for whom the Mercers had just completed the building of a youth centre. There were members of the forces, members of the scouts and guides and young and old were royally entertained by a superb orchestra of young people numbering about 80.

My first impression of London was that it was quiet for a weekday! I walked down Whitehall, rather early, a few people were milling around, but mostly police, some of whom were lifting drain covers to check for bombs! Then to Westminster and a long wait as folk started to gather to go through security checks before entering the Hall. It was a little like airport security, but no shoes needed to be removed! Then onto the next wait and then into the Hall itself, which was magnificent. Not at all what I expected, almost like a huge medieval barn! As people started to gather we found our tables and were amazed to discover that the Royal family were seated individually on tables among us. Hence the Queen was on the table next door to us, which put us all on our guard! We were then briefed, about protocol, the trumpeters came to their places, the fanfare was played and the Queen arrived, walking down the steps of the Hall and to her place. I was quite mesmerized by her demeanour, a diminutive, dignified, charismatic figure, looking slightly alone, all eyes on her waiting for her next move, and wearing the most stunning outfit in mint green with silver laced through it (just making a bid to be a royal correspondent here!)

The lunch passed very quickly, lovely food but not too much time to savour it. Then the departure. The carriage drew up in place, the Yeoman arrived in their stunning red coats and the Queen and the Royal family processed through the Hall.... And the thing I will remember for a long time – we had reached Westminster Hall early before the crowds gathered and it was a little bit like being in a cocoon for a while, but as the carriage proceeded around the corner to begin the procession back to Buckingham Palace, I will always remember the roar of the crowd, it was a phenomenal welcome to her Majesty as she returned to the streets of London.

It was an amazing day. I have a few photographs, but not many. Protocol and security didn't allow it. But it will remain in memory as a very special, privileged occasion, the like of which I will never experience again.

Every Blessing

Penny

### **To arrange Baptisms, Weddings or Funerals please contact:-**

Rev. Penny Green (Priest In Charge)	The Vicarage, Church Lane, Cherry Willingham	01522 595596
Churchwardens:	Mrs F. Styles Elveden, Lincoln Rd. Fiskerton	01522 750690
	Mrs L. Forman Applegarth, Ferry Road Fiskerton	01526 398316
Church Key also available from:	Mrs M Gibson, 14 Ferryside Gardens	01522 752117
Benefice Website:	<a href="http://www.southlawresbenefice.org.uk">www.southlawresbenefice.org.uk</a>	



**SUNDAY July 22<sup>nd</sup> & August 26<sup>th</sup>.**

**9.45am Fiskerton Church**  
Activities, songs and refreshments

Come & have some fun



**CHURCH SERVICES for The South Lawres Benefice:****JULY 2012****1<sup>st</sup>. 4<sup>th</sup>. after Trinity**

8am Holy Communion at Cherry Willingham  
**9.15am *Holy Communion at Fiskerton***  
9.15am Morning Worship at Reepham  
11am Holy Communion at Greetwell

**8<sup>th</sup>. 5<sup>th</sup>. after Trinity**

8am Morning Worship at Cherry Willingham  
**9.15am *Morning Worship at Fiskerton***  
10am Joint Service with Methodist Chapel at Reepham  
10.45am Holy Communion at Cherry Willingham  
3pm Messy Church at Reepham

**15<sup>th</sup>. 6<sup>th</sup>. after Trinity**

8am Holy Communion at Cherry Willingham  
**9.15am *Holy Communion at Fiskerton***  
9.15am Family Worship at Reepham  
10.45am Holy Communion at Cherry Willingham  
6.30pm Compline at Cherry Willingham

**22<sup>nd</sup>. 7<sup>th</sup>. after Trinity**

8am Morning Worship at Cherry Willingham  
**9.45am *Messy Church at Fiskerton***  
10.45 Holy Communion at Reepham –with Cherry Willingham

**29<sup>th</sup>. 8<sup>th</sup>. after Trinity**

**10am Benefice Worship together followed by Picnic and Walk**

**AUGUST****5<sup>th</sup>. 9<sup>th</sup>. after Trinity**

8am Holy Communion at Cherry Willingham  
**9.15am *Holy Communion at Fiskerton***  
9.15am Morning Worship at Reepham  
11am Holy Communion at Greetwell  
3pm Messy Church at Reepham

**12<sup>th</sup>. 10<sup>th</sup>. after Trinity**

8am Morning Worship at Cherry Willingham  
**9.15am *Morning Worship at Fiskerton***  
9.15am Holy Communion at Reepham  
10.45am Holy Communion at Cherry Willingham

**19<sup>th</sup>. 11<sup>th</sup>. after Trinity**

8am Holy Communion at Cherry Willingham  
**9.15am *Holy Communion at Fiskerton***  
9.15am Family Worship at Reepham  
10.45am Holy Communion at Cherry Willingham  
6.30pm Compline at Cherry Willingham

**26<sup>th</sup>. 12<sup>th</sup>. after Trinity**

8am Morning Worship at Cherry Willingham  
**9.45am *Messy Church at Fiskerton***  
10.45 Holy Communion at Reepham –with Cherry Willingham

## Service Rotas for July & August

<b>JULY</b>	<b>Sidesman</b>	<b>Reader</b>	<b>Intercessions</b>	<b>Cleaning</b>	<b>Flowers</b>
<b>1<sup>st</sup>.</b>	Mrs J Lunn	Mrs L Forman	<b>CLERGY</b> <b>Blacksmith Rd.</b>	Mr & Mrs Walkinton	M Dunkling
<b>8<sup>th</sup>.</b>	Mrs S Massey	Mrs G Walkinton <b>2 Corinth 4: 13 – 5.1</b>	Mrs L Forman <b>Ferry side</b>		M Dunkling
<b>15<sup>th</sup>.</b>	Mrs A Townsend	Mrs S Massey <b>2 Corinth 5: 6 – 10 &amp; 14 - 17</b>	<b>CLERGY</b> <b>Lincoln Rd.</b>	Mrs Proctor & Mrs Massey	Mrs L Forman
<b>22<sup>nd</sup>.</b>	<b>MESSY</b>	<b>CHURCH</b>			Mrs L Forman
<b>AUG. 5<sup>th</sup>.</b>	Mrs C Proctor	Mr R Walkinton	<b>CLERGY</b> <b>Clubs &amp; Societies</b>	Mrs Gibson & Mrs Forman	Mrs S Massey
<b>12<sup>th</sup>.</b>	Mrs F Styles	Mr P Forman	Mrs G Walkinton <b>High Meadows</b>		Mrs S Massey
<b>19<sup>th</sup>.</b>	Mrs G Walkinton	Mrs A Townsend	<b>CLERGY</b> <b>Nelson Rd.</b>	Mrs Townsend & Mrs Lunn	Mrs M Broad
<b>26<sup>th</sup>.</b>	<b>MESSY</b>	<b>CHURCH</b>			Mrs M Broad
<b>SEPT. 2<sup>nd</sup>.</b>	Mr R Walkinton	Mrs L Forman	<b>CLERGY</b> <b>Chapel Rd.</b>	Mrs F Styles	Mrs M Gibson

### Village Deaths:

We remember in our prayers the family of Freda Robinson – a past resident of Fiskerton – who passed away on June 6<sup>th</sup>. this year. A funeral service and cremation was held on June 25<sup>th</sup>.

We also pray for the family of Michael and Yvonne Devlin, both of whom died peacefully at home on June 10<sup>th</sup>. 2012 and who were cremated at a service on June 15<sup>th</sup>.

### Wedding Blessing and Baptism

“Those whom God has joined together, let no man put asunder”

June 16<sup>th</sup>. 2012 at St. Clement’s Church,

Dawn Wakelin and Nick Stacey celebrated the blessing of their marriage.

At the same service we were delighted to welcome into the Lord’s family

Mia Charlotte who was Baptised after her parent’s blessing.

### Other Church News:



#### Coffee Mornings in St. Clements Church

**Tuesday July 3<sup>rd</sup>, 17<sup>th</sup> & 31<sup>st</sup>**

**August 14<sup>th</sup>. & 28<sup>th</sup>.**

10am – 11.30am

*Tea/Coffee and homemade cakes.*

*Bookstall and raffle*

At St. Clement’s Church.

It will be lovely to meet up with old friends and make new ones.

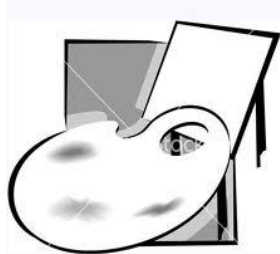
### CHURCH OPEN.....

Don’t forget... St. Clement’s Church will also be open on Saturday mornings in July and August. We shall be open from 10am until noon. So if you just want a few minutes somewhere quiet we hope you will come and make use of the beautiful Church building.

### June Lottery winners:

£10: No. 17: Sandy Massey  
£5: No. 38: John Howard  
£5: No. 22: Marilynne Dunkling

### Lincolnshire Heritage Weekend:



St. Clement's Church will be open for this weekend on Saturday & Sunday September 8<sup>th</sup>. & 9<sup>th</sup>. from 11am – 4.30pm both days.

The Church will be hosting an Art Exhibition entitled "An Artist's Journey".

There will also be other creative activities on offer – to come along and have a go at - over the weekend, so watch out for more information in the September Newsletter. Refreshments & light lunches will be available as well as home-made cakes and preserves for sale.

+++++

### Message from Fiskerton Village Hall Management Committee:

**The Queen's Jubilee Celebrations** on June 2nd were great fun, raised money for Help for Heroes and provided a focus for the village community to celebrate. The weather stayed fair for the picnic and we enjoyed the school children singing and they were very keen to get involved with the old fashioned sports day races. The Scouts provided much needed refreshments and the bouncy castle was constantly busy, everything free. The dance with "Trent Connection" kept the dance space permanently well used with old time and modern numbers. Many thanks to the Village Hall Events Committee, Emma, Barnaby, Brenda, Elaine and Iris and all who generously donated to the raffle prizes as well as those of you who bought tickets. Thanks also to Maralyn Papworth for the use of the school playing field and the organisation of the singing and to John and Mary Pycock for the use of their excellent public address system and to everyone who helped in the organisation of the celebrations. Thanks to the WLDC CAV fund for funding the picnic, to Newlink for cakes and balloons and to Limagrain and Hubbard's Seeds for flower seeds and compost. Due to the generosity of the Fiskerton community I was able to send £572.00 to Help for Heroes.  
Robert Wall.

**AND.....**

### Fiskerton Diamond Jubilee Celebrations.

Thank you very much to the events committee of Fiskerton village hall for the superb family afternoon on the school playing field, it was good to see so many people there mixing in and enjoying the childrens' games and activities.  
The big band dance was also a great evening and those people unable to attend missed out on a grand do.

+++++

### Thanks:

Since moving to Fiskerton last November we have felt thoroughly welcomed and immediately at home.  
We had a break-in on Thursday June 14<sup>th</sup>. and everyone, Church, neighbours and villagers have been so kind and supportive.  
We just wanted to express our thanks to you all.  
Fiskerton is a good place to be.  
Donald and Margaret Harrison,  
Ridings Close

## What's On in July & August:      *In The Village.....*

### **THE LUNCH POT**

Join us for a two course lunch. It will only cost you £3. 00 each.

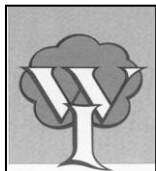
**July date is Tuesday 24<sup>th</sup>. at 12.30pm.**

**Lunch Pot does not meet in August**

For more details ring Mary on 595291. New people welcome.



### **Women's Institute:**



The next meeting on **Thursday July 12<sup>th</sup>**. will be a celebration for the 70<sup>th</sup>. birthday of Fiskerton WI. This will take place , courtesy of Mr & Mrs R Wall at the Old Rectory, Reepham Road.

The August meeting will be in the Village Hall at 7.30pm on **Thursday August 9<sup>th</sup>**. Suzi Milligan will demonstrate Willow Craft. The competition is a Corn Dolly.

Marie Curie  
Cancer Care



### **Marie Curie Blooming GREAT Tea Party.**

You are invited to afternoon tea at 3 Corn Close

On Friday 13<sup>th</sup> July at 2pm

Please come and Help to raise money for this very worthy cause

\*\*\*\*\*



### **What's on JULY**

**All these Services are family & youth friendly with a vibrant children programme. Coffee served from 10:45.**

#### **Sunday Services**

- 1<sup>st</sup>. 11am Reepham and Cherry Willingham Village Hall
- 8<sup>th</sup>. 11am Fiskerton Village Hall with the exciting KidZone
- 15<sup>th</sup>. 11am Reepham and Cherry Willingham Village Hall with the exciting KidZone
- 22<sup>nd</sup>. 11am Fiskerton Village Hall with the exciting KidZone
- 29<sup>th</sup>. 11am Reepham and Cherry Willingham Village Hall

#### **The Mix for all 11-17 year olds**

July 6<sup>th</sup>. FUEL

July 20<sup>th</sup>. Day Out

The Mix then resumes in September

**Connect groups**      *Connect groups provide a social setting for you to connect with church life, develop your faith and provide opportunities for helping the community.*

#### **Adults**

Mon 11am & Wed 8pm  
in Fiskerton

Tues 8pm in Cherry Willingham

#### **Youth Connect**

**Thurs 3:15 – 4.30pm**

Youth Wing Cherry Willingham

#### **Children – Junior Connect**

fortnightly on Friday 4-5pm,  
Fiskerton

Fri. 13<sup>th</sup>. July Summer Evening  
Celebration

### **Summer Puppet Workshop**

### **HOLIDAY CLUB**

**July 23-27**

**6-11 years**

**9.30 – noon**

**Fiskerton Scout Hall**

**£5 registration fee  
per family**

Contact Alison  
Merryman

01522 876996 to  
book a place

### **THE THIRD THURSDAY BOOK CLUB**

For women who love to read a good book, and talk about it with friends! It's on the third Thursday of each month. Come and enjoy, and meet new friends. We read a wide variety of great books, a different one each month. Like to know more

Time: 7.30 pm 25 Waterford Lane, Cherry Willingham

**Thursday 19th July**

Tel : Veronica 872011

Chris Darcel, District Councillor for Fiskerton and Langworth,  
email: [chris@darcel.entads1.com](mailto:chris@darcel.entads1.com), Tel: 01522 750411. 3 Holmfield, Fiskerton

**Jubilee celebrations.** Unfortunately I was not here but I am told the street party in Holmfield was great fun. The weather was kind on the Tuesday. I went to a similar party in Reading on the Sunday. It was a total wash out. I was in London that Sunday morning, on Waterloo Bridge. Seeing all the crowds gathering was quite exciting in spite of the rain.

**The Fiskerton crime wave.** In the short time since the entering all the Parish Plan details into the database, we have experienced a crime wave. Two properties were hit in Blacksmiths Lane, where a gate and window were forced. Bulky items were taken as well as cash.

There was a walk in burglary in Hall Lane. The householder was in the garden. What would have happened had the owner gone back in doors and disturbed the thief? A stolen purse was found, empty, hidden in the back garden next door. Of course the money had gone.

A couple of days later there was a "break in" in Ridings Close. I am told a double glazed window was broken to gain entry. I have twice asked the police to feature the thefts on the Home Watch Page but no joy. Langworth Parish Council is installing a low cost cctv system for the playground and village hall. Perhaps we need to install similar systems in our homes together with the necessary burglar alarm. In Langworth the cctv system cost about £150 from Maplin.

**The Parish Plan:** I have just finished entering the information in the database, and would like to thank Graham, Pam, Kipper and Paul for their help. It has taken a time. (Nearly 15 hours just ticking Yes boxes.) No final analysis yet but it seems to me top of the list was dog fouling, followed by a multipurpose playing field and footpaths to Reepham and Cherry. Most people felt safe in their homes and had never had to call a police officer. How quickly things can change.

**The Holmfield Open Spaces.** There is an ongoing saga regarding the two open spaces on the Chapelrise Estate, between residents, the parish council, West Lindsey District Council and Morris Homes. I do not want to bore others with the details but the situation is not satisfactory and there was a three way meeting in the village hall last Monday. The issue has been on going since 2006 so the matter has dragged on for quite a while. Hopefully it will be sorted at the next parish council meeting in July.

**Grass mowing.** Several residents have complained about the overgrown foliage on our footpaths, the riverside walks and the open spaces. With regards the footpaths, Lincolnshire County Council regard the matter as a joke and blames the lack of cutting on government cutbacks. Cutting is down from three times a year to two. A 33% reduction. My council tax has not been reduced. The Witham Drainage Board have been notified regarding the river banks.

\*\*\*\*\*

#### **VILLAGE HALL BOOKINGS FOR JULY:**

Monday	2 <sup>nd</sup> .	49 Squadron	10am – 3pm
Monday	23 <sup>rd</sup> .	Parish Council	7.30pm – midnight
Tuesday	24 <sup>th</sup> .	Luncheon Club	10am – 2pm
Tuesday	3 <sup>rd</sup> . 10 <sup>th</sup> . 17 <sup>th</sup> . 24 <sup>th</sup> . 31 <sup>st</sup> .	Pilates	5.30pm – 6.30pm
Tuesday	10 <sup>th</sup> .	Workshop	9am – 4pm
Wednesday	4 <sup>th</sup> . 11 <sup>th</sup> .	Workshop	9am – 4pm
Wednesday	4 <sup>th</sup> . 11 <sup>th</sup> . 18 <sup>th</sup> . 25 <sup>th</sup> .	Antenatal Classes	7.30pm – 9.30pm
Thursday	5 <sup>th</sup> .	Workshop	9am – 4pm
Thursday	5 <sup>th</sup> . 12 <sup>th</sup> . 19 <sup>th</sup> . 26 <sup>th</sup> .	Aerobics	9.30am – 10.30am
Thursday	5 <sup>th</sup> . 12 <sup>th</sup> . 19 <sup>th</sup> . 26 <sup>th</sup> .	Zumba	7.15pm – 8.15pm
Friday	6 <sup>th</sup> .	Pilates	9.30am – 10.30am
Friday	6 <sup>th</sup> . 13 <sup>th</sup> . 20 <sup>th</sup> . 27 <sup>th</sup> .	Bingo/Socials	7.30pm - midnight
Saturday	7 <sup>th</sup> . 21 <sup>st</sup> . 28 <sup>th</sup> .	Weight Watchers	9.15am – 11.45am
Saturday	14 <sup>th</sup> .	Sati Group	9.30am – 4.30pm
Sunday	1 <sup>st</sup> . 8 <sup>th</sup> . 15 <sup>th</sup> . 22 <sup>nd</sup> . 29 <sup>th</sup> .	Social Evenings	7.30pm – midnight
Sunday	17 <sup>th</sup> .	Private Party	9am – 2pm
Sunday	8 <sup>th</sup> .	Causeway Projects	2pm – 5.00pm
Sunday	8 <sup>th</sup> . 22 <sup>nd</sup> .	The Vine	11am – 1.30pm

To make a booking or check availability please contact:- Booking Secretary – Jenny Hayes on 07510281232

## **PARISH COUNCIL NEWS                      MAY**

*Please be advised that these are notes of the meeting taken by the Clerk and cannot in any way be regarded as the official minutes of Council proceedings until they are approved and signed at the next meeting*

### **ANNUAL GENERAL PARISH COUNCIL MEETING – 21<sup>st</sup> May, 2012**

- Officers elected were: Chairman - Councillor Scott, Vice Chairman - Councillor Cooke. Planning Committee – Councillors Scott, Cooke, Patchett and Mrs. Howard. Play Area Inspector – Councillor Wall. Police Liaison Officer – Councillor Cooke.
- The Clerk was asked to contact LCC Highways about – Flooding on High Street outside Carpenters Arms, condition of road near church opposite Blacksmith Road, dangerous sign at junction of Hall Lane/Ferry Road, condition of pathway on Chapel Road due to building works at The Close. She was also asked to contact the Environment Agency about the condition of the tarmac near Five Mile Bridge, Hodgson's Charity about ownership of a willow tree on the allotment field and County Landscapes asking them to trim as well as cut the open spaces on Holmfield
- PCSO Payne reported that the Simple SID speed register had been repaired and was back on the village schedule
- Planning permission has been granted to the following applications: 1, Application for redevelopment of holiday park, amended disabled lodge at Short Ferry Caravan Park, Ferry Road, Fiskerton; 2. Application for the retention of existing wellsite for the production of oil from existing boreholes and retrospective permission to locate an additional four storage tanks in accordance with amended details received 10 April 2012 at land at the former airfield at Fiskerton; 3. Application to retain the existing wellsite for the production of hydrocarbons at disused airfield, Fiskerton
- Open Spaces, Holmfield. Representatives from WLDC Planning and Morris Homes had been invited to attend this meeting. WLDC asked if the discussion could be deferred until the next meeting; Morris Homes refused to attend as they insist that the Parish Council owns the land. The Parish Council have no paperwork proving this and have already asked WLDC Planning Enforcement to investigate. It was agreed to arrange a special meeting between the Parish Council, WLDC Planning Enforcement and residents – to be arranged ASAP.
- The Clerk's hours have been reduced to nine per week

Date of Next Meeting: Monday 18<sup>th</sup> June, 2012 at 7.30 p.m. in the village hall

## **PARISH COUNCIL NEWS                      JUNE**

*Please be advised that these are notes of the meeting taken by the Clerk and cannot in any way be regarded as the official minutes of Council proceedings until they are approved and signed at the next meeting. Official minutes are available at [http://www.fiskerton-lincs.org.uk/html/meetings\\_minutes.html](http://www.fiskerton-lincs.org.uk/html/meetings_minutes.html)*

### **PARISH COUNCIL MEETING – 18<sup>th</sup> JUNE, 2012**

- The Clerk was asked to contact:
  1. LCC Footpaths, Environment Agency and Witham Third IDB about cutting long grass on public footpaths and the river bank;
  2. Mr. P. Good about remarking the public footpath across the field up to the airfield along the field boundary
  3. Lincolnshire Police about recent village burglaries
  4. Reepham Parish Council supporting plans to have a cyclepath from the villages to the doctors' surgery in Nettleham
- Open Spaces, Holmfield. A meeting had been held with the Area Team Development Officer from WLDC at which it was confirmed that the land is still owned by Morris Homes. He is to contact Morris Homes, whilst the Parish Council is looking at planting schemes.
- There are plans to install a covered-in shelter for teenagers in the grounds of the village hall, funding for which will hopefully come from WLDC Councillors' Initiative Fund.
- LCC Highways is to investigate the surface water system along High Street and arrange for the drains to be jetted to alleviate flooding outside the Carpenters Arms. They are also to repair potholes in the vicinity of the Church and contact the builders at The Close to remove their building materials from the verges and make good any damaged areas.
- The internal audit has been completed and the audit return sent to the external auditors.
- The Environment Agency has repaired the tarmac at the base of the Five Mile bridge
- Parish Plan. All information has been entered into the database. Most concerns appear to be about dog fouling and the need for a multi-function sports field, a shelter for youths and footpaths to Reepham and Cherry Willingham. The Parish plan steering group will report in due course.
- Following a motorbike accident near the church, the Parish council would like to thank Mr. Andrew Leishman from Reepham for his actions and assistance at the scene of the accident.
- Date of Next Meeting: Monday 2<sup>nd</sup> July, 2012 at 7.30 p.m. in the village hall









## Where does the future take us?

### Splashing , Jumping and Dashing!

The children are busy practicing for Sports Day and in the outside play area they are making use of the water play equipment. This was purchased earlier in the year with our Echo Community Cash, thanks to all of you who contributed tokens. The outside play area has also just had a new gate fitted.

So as the summer term draws to a close our preschool is better equipped, more secure and looking smarter. The improvements at preschool have added to the children's enjoyment of their time spent here as many of them prepare to make the move up to primary school.

With the recent appointment of a new setting leader, Maria Davidson, we now have five staff members. They are doing an admirable job of providing individual support for each of the children over our age range of 2-5 years. This allows each child to make the most of the opportunities that preschool presents for socialising, playing and learning with the other children of the village with whom they are likely to be class-mates for the next seven years.

As the end of the year approaches it is an opportunity for us to re-evaluate how we are doing things at preschool.

- Is our preschool meeting the needs of the village and surrounding area?
- Are the sessions offered at present sufficient?
- Do we need to offer more places at 2 years of age or should we restrict the intake so that children only attend for one year prior to school?

These are the questions preschool is considering and we would welcome your opinion. You may email your views to [fiskertonpreschool@googlemail.com](mailto:fiskertonpreschool@googlemail.com)

Fiskerton Preschool is currently run by a committee of parent volunteers and is a member of the Preschool Learning Alliance. This allows parents a direct influence on how the preschool is run but also requires parental involvement on the committee for the preschool to continue. Constitutionally parents of children currently attending preschool must form the majority of the committee. There is however the opportunity for members of the wider community with an interest and possibly with relevant experience to get involved and take on a role as treasurer, secretary or chair. Feel free to contact us.



### CHERRY WILLINGHAM COMMUNITY CHOIR

**Come along and join a friendly bunch of singers**

**At**

**The Cherry Willingham Primary School**

**Infant hall**

**7.30-9.00pm**

**When**

**2nd and 9<sup>th</sup> July**

**30<sup>th</sup> July social event, 6<sup>th</sup> and 20<sup>th</sup> August.**

**We sing songs by Andrew Lloyd Webber, Beatles, Matt Redman, Michael Ball, Abba, Status Quo, Manning Sherwin, Tim Hughes and lots more.**

**For more info please contact:-**

**Jane Mob. 07720050214**

**E-mail [jane.george1@ntlworld.com](mailto:jane.george1@ntlworld.com)**

**Supported by The Vine Community Church**



### Important Newsletter Information:

Please note that items for inclusion in the Parish News can be handed in at Wishing Well Stores. Items can also be posted to Mrs L. Forman, 'Applegarth', Ferry Rd. Fiskerton, Lincoln LN3 4HU or please telephone 01526 398316.

You can e-mail items to [fiskertonnews@btinternet.com](mailto:fiskertonnews@btinternet.com)

Items **MUST** be with the Editor by 19<sup>th</sup>. Of the month.

## **What's On in July & August:      *In The Area.....***

### **SATURDAY 7<sup>TH</sup> JULY AND SATURDAY 4<sup>TH</sup> AUGUST**

Ladies come and enjoy a full English breakfast at 'Rosie Lea Café', Cherry Willingham on the first Saturday of each month.

We meet at **8.45am for 9.00am** and after enjoying our breakfast, we sit back and listen to an interesting, short talk from a Christian speaker – **all for £5.20.**

**The speaker in July is Wendy Pitt and in August it is Annette Townsend**

Ladies going from Fiskerton can provide you with a lift so book your places by ringing  
**Jan 01522 753432 or Ann 01522 800209.**

### **COFFEE MORNING:**



*The Charity and Fairtrade Coffee Mornings will take place in Cherry Willingham Church Hall on **Saturday July 14<sup>th</sup>** & **Saturday August 11<sup>th</sup>**, from 10am – 11.30am.*

*All proceeds from the refreshments and raffle go to a chosen charity.*

*The Fairtrade Stall will be available for groceries and gifts.*

### **COFFEE AND CHAT**

There will be Coffee Mornings in aid of Charity at  
Reepham Methodist Church Hall on

**SATURDAY July 21<sup>st</sup> & August 18<sup>th</sup>, from 10am – 11.30am**

Come along and enjoy a coffee and home-made cakes as well as meeting old friends and making new. All profits from this will go to Charity.

There will be a Fairtrade Stall at these events



### **Men2gether; All men are most welcome.**

### **The Local Men's Breakfast**

**When – Saturday 21<sup>st</sup> July**

**Where – Rosie Lea Café, The Parade, Cherry Willingham**

**Time – 8.30am for 8.45 start. Finish by 9.45am**

**Cost - £5.20, payable when you arrive.**

*Come along and enjoy a full English breakfast, meet old friends, make new friends and listen to a short talk from a Christian speaker.*

*To book a place, or places, please email David Burrows [david@theburrows.net](mailto:david@theburrows.net) Tel: 824936, or John Pycock [john.pycock@btopenworld](mailto:john.pycock@btopenworld) by Wednesday 18<sup>th</sup>. July 2012. Numbers are limited so please book early to ensure a place.*

+++++

**SUNDAY 30<sup>TH</sup> SEPTEMBER**

**11 AM – 4.30 PM**

Thinking of getting married in church? Then come along to a.....

### **WEDDING FAIR**

At St Peter and St Paul Church; Cherry Willingham

*Brides of Bailgate*



*Kerricraft Cakes*



*John Turner Photography*

A display of wedding dresses, flowers, cakes and photography and an opportunity to talk about getting married in church

*FLOWERS by Design of Nettleham*