

### **Vicar's Blog :**

What a year it has been! Queens Jubilee, Olympics and as you read this we will be in the middle of the Paralympics and I hope we are able to get behind the Paralympians in the same way that we got behind the likes of Mo Farrar, Jess Ennis, Laura Trott, Katherine Spencer and their many colleagues who took part in the Games. There were some memorable moments that will live in our memories for a long time .... And those who compete in the Paralympics will no doubt give us more great memories. Many of these athletes have already overcome massive challenges in their lives to get this far and it's wonderful to see them being given a 'big stage' on which to perform.

I had the privilege of attending the Olympic Park for the day, to see some hockey. I have to say that my over-riding impression was that the whole set up was brilliantly organised. The volunteer Games-makers were outstanding, and there was a palpable feeling of good will, celebration and a pride in what had been achieved. I came away thinking ... if only it could always be like this, if only we could always enjoy this great sense of vision and unity and purpose. A sense that together we can rise to the challenge and produce something far more than we ever expected. I do believe that this last month has shown us something of our true humanity, played out in community and most of us have enjoyed that experience one way or another.

All this does, however, take leadership. It takes people with vision to make sacrifices and to stand up, sometimes in the face of opposition and say.... this is the way forward and we can do it! I do not understand what it takes to put together an Olympic Games – it is such a complex exercise, but someone did... and we should thank them for it.

The question of leadership is one with which I am often exercised, since I am called to lead a group of churches. Happily I don't do that alone, many join me in that calling, and the great news is that we have a wonderful role model and teacher – Jesus Christ – Son of God whose sacrificial love and servant heart, whose challenging words and visionary life show us the way to lead.

As the national church we are also engaged in that question of leadership as a new Archbishop to succeed Archbishop Rowan Williams is appointed. I trust that as the new appointee casts and communicates his vision, we will all be able to engage with unity and purpose and see a church mobilised for this century.

Every Blessing,  
Penny

#### **To arrange Baptisms, Weddings or Funerals please contact:-**

Rev. Penny Green (Priest In Charge)	The Vicarage, Church Lane, Cherry Willingham	01522 595596
Churchwardens:	Mrs F.Styles Elveden, Lincoln Rd. Fiskerton	01522 750690
	Mrs L. Forman Applegarth, Ferry Road Fiskerton	01526 398316
Church Key also available from:	Mrs M Gibson, 14 Ferryside Gardens	01522 752117
Benefice Website:	<a href="http://www.southlawresbenefice.org.uk">www.southlawresbenefice.org.uk</a>	



**NEW DATE! NEW DATE!**

**SUNDAY September 9<sup>th</sup>.**  
**9.45am Fiskerton Church**  
Activities, songs and refreshments  
Come & have some fun



<b>CHURCH SERVICES for The South Lawres Benefice:</b>		<b><u>SEPTEMBER 2012</u></b>
<b>2<sup>nd</sup>.</b>	<b>13<sup>th</sup>. after Trinity</b>	
	8am	Holy Communion at Cherry Willingham
	<b>9.15am</b>	<b><i>Holy Communion at Fiskerton</i></b>
	9.15am	Morning Worship at Reepham
	11am	Holy Communion at Greetwell
	3pm	Messy Church at Reepham
<b>9<sup>th</sup>.</b>	<b>14<sup>th</sup>. after Trinity</b>	
	8am	Morning Worship at Cherry Willingham
	9.15am	Holy Communion at Reepham
	<b>9.45am</b>	<b><i>Messy Church at Fiskerton</i></b>
	10.45am	Holy Communion at Cherry Willingham
<b>16<sup>th</sup>.</b>	<b>15<sup>th</sup>. after Trinity</b>	
	8am	Holy Communion at Cherry Willingham
	<b>9.15am</b>	<b><i>Holy Communion at Fiskerton</i></b>
	10am	Holy Communion at Reepham –joint service with Methodist Chapel
	10.45am	Holy Communion at Cherry Willingham
	6.30pm	Compline at Cherry Willingham
<b>23<sup>rd</sup>.</b>	<b>16<sup>th</sup>. after Trinity</b>	
	8am	Morning Worship at Cherry Willingham
	<b>9.15am</b>	<b><i>Morning Worship at Fiskerton</i></b>
	9.15am	Family Worship at Reepham
	10am	Barn Service at Cherry Willingham
<b>30<sup>th</sup>.</b>	<b>17<sup>th</sup>. after Trinity (Back to Church Sunday)</b>	
	<b>10am</b>	<b><i>Benefice Harvest Festival Service at Fiskerton**</i></b>
	6.30pm	Evensong at Cherry Willingham
<p>** We hope lots of people will come to this service and will feel able to bring along a small harvest gift - the choice of which is entirely up to you. It can be fresh produce or tins/packets which will go to Lincoln Community Larder. The collection from this service will be sent to Lincoln Women's Aid.</p>		

#### Service Rota for September

	<b>Sidesman</b>	<b>Reader</b>	<b>Intercessions</b>	<b>Cleaning</b>	<b>Flowers</b>
<b>2<sup>nd</sup>.</b>	Mr R Walkinton	Mrs G Walkinton <b>James 1: 17 - end</b>	<b>CLERGY</b> <b>Chapel Road</b>	Mrs S Tolley	M Gibson
<b>9<sup>th</sup>.</b>	<b>MESSY</b>	<b>CHURCH</b>			M Gibson
<b>16<sup>th</sup>.</b>	Mrs J Lunn	Mrs A Townsend <b>James 3: 1 - 12</b>	<b>CLERGY</b> <b>Meadowbank Ave</b>	Mrs F Styles	Mrs J Thomas
<b>23<sup>rd</sup>.</b>	Mrs S Massey	Mr R Walkinton <b>James 3: 13 – Ch. 4: v 3 &amp; vv7 – 8a</b>	Mrs L Forman <b>Village farmers</b>		Mrs L Woodthorpe
<b>30<sup>th</sup>.</b>	Mrs A Townsend				<b>Harvest</b>
<b>Oct.7<sup>th</sup>.</b>	Mrs C Proctor	Mrs S Massey	<b>CLERGY</b> <b>Ferry Rd.</b>	Mrs M Broad	Cubs & Scouts

#### Village Deaths:

We remember the family and friends of Joe Weston, who was buried in Fiskerton Churchyard in July, as well as the family of Fiskerton resident Norah Hancock, who also passed away recently.

## Other Church News:



### Coffee Mornings in St. Clements Church

**Tuesday September 11<sup>th</sup>. & 25<sup>th</sup>. 10am – 11.30am**

*Tea/Coffee and homemade cakes. Bookstall and raffle*

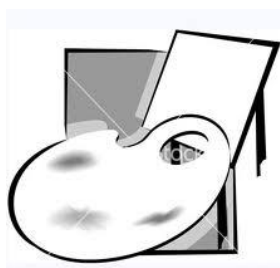
At St. Clement's Church.

Thank you to all who have supported the Coffee Mornings over the Summer and please note that these are the final coffee mornings for this year.

### July & August Lottery winners:

£25: No 26:	Sue Bradley	£25: No 20:	Lois Woodthorpe
£10: No. 60:	Rae Rousseau	£10: No. 52:	Mrs S A Holberry
£5: No. 31:	Mr & Mrs D Harrison	£5: No. 24:	Mr S Canner
£5: No. 15:	Mr & Mrs D Willey	£5: No. 41:	Mr & Mrs Walkinton

### LINCOLNSHIRE HERITAGE WEEKEND:



St. Clement's Church will be open for this weekend on Saturday & Sunday September 8<sup>th</sup>. & 9<sup>th</sup>. from 11am – 4.30pm both days.

This year we will be featuring the art work of Christopher and Carol Bason who are members of Lincoln East Artists. This is a group of local artists who come from this part of Lincolnshire and who regularly exhibit in Lincoln Cathedral and elsewhere. The theme of this exhibition is that of an '*artists' journey*' and both artists who have very different styles will try to demonstrate this.

Christopher, who is an ex teacher will be available for children to have a go at simple calligraphy in the church and these sessions will be free to all – children and adults alike. These sessions have proved very popular at the Church Schools Festival and your children may have experienced them at the cathedral. Carol will be available to explain the various techniques which she uses in her paintings which are unique to her.

Paintings can be purchased from this exhibition and the artists will be donating 10% to church funds.



*There will also be a small exhibition about the artist Frank Bramley. Frank was born in May 1857 in Sibsey, near Boston in Lincolnshire. He moved to Fiskerton Hall with his parents, three brothers and two sisters where they first appear in the census of 1861. His father, Charles, was by far the largest farmer in the village and was prominent in parish and local affairs until the 1890's. Frank regularly exhibited at the Royal Academy in London from 1884 to 1912 and was made an R.A. in 1812.*

Delicious food will be available both days and you will have a unique opportunity to browse the paintings, enjoy the food at your leisure and visit this beautiful church. You will be very welcome and there will be no time limits to your visit.

\*\*\*\*\*

**FISKERTON KIDS CLUB**

**FISKERTON KIDS CLUB**

**FISKERTON KIDS CLUB**

Due to work commitments we are looking for **VOLUNTEERS** to Take Over the Kids Club.

They **MUST** be enthusiastic and fun loving  
Contact Brenda – 752998 OR Dawn – 59500

## What's On in September:    *In The Village.....*

### THE LUNCH POT

Join us for a two course lunch. It will only cost you £3. 00 each.

**September dates are (Tuesday) 4<sup>th</sup>. & 18<sup>th</sup>. at 12.30pm.**

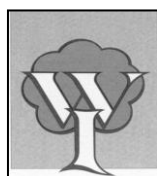
For more details ring Mary on 595291. New people welcome.



### GARDENING CLUB:

The September meeting will take place on **Monday 10<sup>th</sup>**. at 7.30pm in the Village Hall.

Lorna Bennett will give a talk entitled "Good Companions". All welcome.



### *Women's Institute:*

On Thursday **September 13<sup>th</sup>**. The WI will be holding a Harvest Supper with a 'Harvest Quiz'. At 7.30pm in the Village Hall. Raffle Mrs Gibson & Mrs Toyne.

### Lincolnshire Night

***Back By Popular demand.....***

On Saturday **September 29<sup>th</sup>**. Fiskerton WI - in conjunction with St. Clement's Church - will be holding a another Lincolnshire Night in Fiskerton Village Hall. There will be a 3 course meal and an "After Dinner Speaker" with the bar open.

For further details and tickets please contact either Mary Gibson (752117) or Mary Pycock (595291) . But HURRY! There are only 60 places and the last one was a sell-out!



### Fiskerton Computer Club

Starts on Wednesday **19th September 2012** 1pm till 3pm

£5.00 registration fee. - running for 6 weeks

Basic ICT **and** using the Internet **Plus** using word

Tel: Tracey on 753285 to book your place.

### **FISKERTON VILLAGE HALL EVENTS COMMITTEE**

Present

### **ANNUAL FUN QUIZ**

**Saturday September 22<sup>nd</sup>. 2012**

**7.15 for 7.30pm start at the Village Hall**

**Teams no more than 6 people**

**Pie and Peas Supper**

**Vegetarian option available, please order when booking table**

**To Book your table ring Iris 753197 or Rob 595336**

**Bar Available**

**£3.50 per head**

### MOBILE LIBRARY

The mobile Library will be at the Village Hall on **Wednesday September 12<sup>th</sup>**. between 3.30pm and 4.30pm. The vehicle has a lift/ramp for easy disabled access. Don't forget it is FREE to join and borrow books.

Chris Darcel, District Councillor for Fiskerton and Langworth,  
email: [chris@darcel.entadsl.com](mailto:chris@darcel.entadsl.com), Tel: 01522 750411. 3 Holmfield, Fiskerton

Surprise, surprise, something different!

A few weeks ago I went on a bat “walk & talk” in Chambers Wood and last night to a LimeWoods “walk, talk and BBQ” at Southery. Most weeks I take part as a Woodland Worker for a couple of hours as a volunteer either at Wragby or Market Rasen.

Apparently, the work is valuable for conservation reasons and would not be done if left to the open market.

There are a number of interesting events planned over the next few weeks, including Action for Dormice, Gardening for Butterflies, a Star Night, an Autumnal Forage for Food and Medicine with Debbie Lincoln and a Green Woodworking event. This is all besides the regular Woodland Workouts that take place most Tuesdays.

Some events are free, for others there is a small charge but all provide an excellent opportunity to take in some fresh air and to get away from the television or computer screen.

Details can be found in “Lincolnshire Lime Woods Whats On” handbook and I will make sure there are copies at the Wishing Well Stores and at Short Ferry or you can contact me, details below, or better still phone Hannah Darcel, Forestry Commission telephone 01632 821 452 / 07789 942599. And yes, we are related!

Lincolnshire Limewoods Project can be contacted at 01522 782070, by email, [limewoods@lincolnshire.gov.uk](mailto:limewoods@lincolnshire.gov.uk) and the website is [www.limewoods@lincolnshire.gov.uk](http://www.limewoods@lincolnshire.gov.uk).

At the moment it looks as though the village youths will get a shelter towards the rear of the village hall, planning permission willing, and that the open spaces on Chapelrise will be planted up with a simplified scheme to look both attractive and be low maintenance.


Which brings me on to the next point, I would like to thank Mrs Smithson, Clerk to the Parish Council for repeatedly contacting the contractors over delays in cutting the grass and Mrs Dorris Farrell for her “on going” efforts on behalf of the young people in the parish. Perhaps it will be a MUGA next time.

The Parish Plan Steering Group are meeting next week to analyse the survey and it will be interesting to see how we interpret the results. Let you know next time.

Lastly, if anyone wishes to contact me on District Council matters I am always pleased to take your call, so please phone me on the number at the top of the article.

Chris.

*"Every child has the right to an adventure.  
Life is about grabbing opportunities.  
The prizes don't always go to the biggest,  
The best and the strongest—  
they go to those who persevere  
These are simple life lessons that Scouting teaches."  
Bear Grylls—Chief Scout*



**5TH LINCOLN  
FISKERTON ST CLEMENTS**

**...EVERYDAY ADVENTURE**

**JOIN THE  
ADVENTURE.**

Beavers (Age 6-8) meet on a Tuesday      Cubs (Age 8-10) meet on a Thursday  
Scouts (Age 10-14) meet on a Wednesday      Explorers (Age 14-18) meet on a Friday

**For any information, Contact the GSL, Andrew Cooke on 0798 361 0026**  
**For information about Bookings contact Ann Chesman on mobile 0774 983 6283**

*Church for Life as it is today: Faith in God gives life more meaning*

**Sunday Services** All these services are family and youth-friendly with a vibrant children's programme  
**2<sup>nd</sup> September 11am** Family Service at Reepham & Cherry Willingham Village Hall  
**9<sup>th</sup> September 11am** at Fiskerton Village Hall  
**16<sup>th</sup> September 11am** at Reepham & Cherry Willingham Village Hall  
**23<sup>rd</sup> September 11am** at Fiskerton Village Hall  
**30<sup>th</sup> September 11am** at Reepham & Cherry Willingham Village Hall

**Midweek Connect Groups for all ages**, providing a social setting for you to connect with people, understand the Bible and develop as a person of faith in the world today.  
**Adults : Wed 8pm** in Fiskerton **Tues 8pm** in Cherry W.  
**Youth Connect** Thurs 3.15-4.30 at Cherry Willingham Youth Wing  
**Junior Connect** fortnightly on Friday 4-5pm, Fiskerton

**There's lots more going on too!**  
 Visit [www.thevinecommunitychurch.org.uk](http://www.thevinecommunitychurch.org.uk) or Tel Rev V. Podbury on 872011 (Church Office)  
 The Vine Community Church Reg Charity 1142056 is part of the Ground Level Network of Churches and in Churches Together in the UK

**THE THIRD THURSDAY BOOK CLUB**  
**For women who love to read a good book, and talk about it with friends! It's on the third Thursday of each month. Come and enjoy, and meet new friends. We read a wide variety of great books, a different one each month. Like to know more**  
 Time: 7.30 pm 25 Waterford Lane, Cherry Willingham Tel : Veronica 872011

**The Mix** for all 11-17 year-olds  
 The Mix resumes in September

### VILLAGE HALL BOOKINGS FOR September:

Monday	3 <sup>rd</sup> .	Parish Council	7.30pm – 9.30pm
Monday	10 <sup>th</sup> .	Gardening Club	7.30pm – 9.30pm
Monday	17 <sup>th</sup> .	WI Walk	10am – 3pm
Tuesday	4 <sup>th</sup> . 18 <sup>th</sup> .	Vill. Hall Comm.	7.30pm – 9.30pm
Tuesday	4 <sup>th</sup> . 11 <sup>th</sup> . 18 <sup>th</sup> . 25 <sup>th</sup> .	Luncheon Club	10am – 2pm
Tuesday	11 <sup>th</sup> .	Pilates	5.30pm – 6.30pm
Wednesday	5 <sup>th</sup> . 12 <sup>th</sup> . 19 <sup>th</sup> . 26 <sup>th</sup> .	Kid's Club	3.45pm – 5.15pm
Wednesday	12 <sup>th</sup> .	Computer Classes	1pm – 3pm
Thursday	6 <sup>th</sup> . 13 <sup>th</sup> . 20 <sup>th</sup> . 27 <sup>th</sup> .	Antenatal Class	7.30pm – 9.30pm
Thursday	6 <sup>th</sup> . 13 <sup>th</sup> . 20 <sup>th</sup> . 27 <sup>th</sup> .	Aerobics	9.30am – 10.30am
Friday	7 <sup>th</sup> . 14 <sup>th</sup> . 21 <sup>st</sup> . 28 <sup>th</sup> .	Zumba	7.15pm – 8.15pm
Saturday	1 <sup>st</sup> . 15 <sup>th</sup> . 22 <sup>nd</sup> . 29 <sup>th</sup> .	Bingo/Socials	7.30pm - midnight
Saturday	8 <sup>th</sup> .	Weight Watchers	9.15am – 11.45am
Saturday	22 <sup>nd</sup> .	Sati Group	9.30am – 4.30pm
Saturday	29 <sup>th</sup> .	Private Party	7pm – 9pm
Sunday	2 <sup>nd</sup> . 9 <sup>th</sup> . 16 <sup>th</sup> . 23 <sup>rd</sup> . 30 <sup>th</sup> .	Village Hall Quiz	7.30pm – midnight
Sunday	16 <sup>th</sup> .	Private Party	1pm – 3pm
Sunday	9 <sup>th</sup> . 23 <sup>rd</sup> .	Lincs. Night	7.30pm – 10.30pm
		Social Evenings	7.30pm – midnight
		Causeway Projects	2pm – 5.00pm
		The Vine	11am – 1.30pm

To make a booking or check availability please contact:- Booking Secretary – Jenny Hayes on 07510281232

### Important Newsletter Information:

Please note that items for inclusion in the Parish News can be handed in at Wishing Well Stores. Items can also be posted to Mrs L.Forman, 'Applegarth', Ferry Rd. Fiskerton, Lincoln LN3 4HU or please telephone 01526 398316.  
 You can e-mail items to [fiskertonnews@btinternet.com](mailto:fiskertonnews@btinternet.com)  
 Items **MUST** be with the Editor by 19<sup>th</sup>. Of the month.

## **PARISH COUNCIL NEWS**

*Please be advised that these are notes of the meeting taken by the Clerk and cannot in any way be regarded as the official minutes of Council proceedings until they are approved and signed at the next meeting. Official minutes are available at [http://www.fiskerton-lincs.org.uk/html/meetings\\_minutes.html](http://www.fiskerton-lincs.org.uk/html/meetings_minutes.html)*

### **PARISH COUNCIL MEETING – 18<sup>th</sup> JUNE, 2012**

- The Clerk was asked to contact:
  1. LCC Highways about the condition of the road to Short Ferry
  2. The Ridings Close Management Committee about the overgrown public open space
  3. Nick Ethelstone, WLDC Area Team Development, concerning the planting of the open space on Holmfield
- Planning permission is being sought for the installation of a covered-in shelter for teenagers in the grounds of the village hall
- It is hoped that the grass cutting schedule will be back on track by the end of July. The Parish Council is to add the newly adopted highway verges on the Chapel Rise estate to their grass cutting contract.
- The Lincolnshire Limewoods Noticeboard has been installed in the village hall grounds next to the Parish Council Noticeboard
- Steps are to be put into the riverbank along public footpath no.116 near to the Five Mile Bridge. The public footpath is to be closed from 10<sup>th</sup> September, 2012 for three weeks; alternative route is the road, Diamond House, Ferry Road, Church View Crescent, St. Clement's Drive and vice versa.
- The WLDC Code of Conduct was formally adopted by all Parish Councillors
- Public Right of Way no.103, Fiskerton/Barlings (Engine Dike Footbridge) will be closed from 20<sup>th</sup> August to 21<sup>st</sup> September, 2012 for essential maintenance works
- The official address for the development on the site of the old Nursery Unit is School Close
- The Environmental Stewardship scheme at the rear of St. Clement's Drive is to end on 30<sup>th</sup> September, 2012, with the loss of approximately 0.1 mile and 1.9 hectares of permissive open access. The farmer is to be asked about the possibility of retaining informal access
- Date of Next Meeting: Monday 3<sup>rd</sup> September, 2012 at 7.30 p.m. in the village hall

### **Your Help and Assistance is Required in an Unusual Case**

Police have received a number of reports from around the Fiskerton area in relation to someone defecating in driveways and on footpaths. It is suspected that due to the time of day that these incidents are occurring which is in the very early morning and the various locations we suspect that it may possibly be a person who goes out running/jogging early (possibly as early as 4:30-5am). The incidents are sporadic and do not occur on a frequent basis, but we understand that these incidents have been going on for a good few years. There is further information that leads us to believe that this is a runner/jogger but this is for Police information only at this time.

We understand it to be a person as opposed an animal because a sheet(s) of white kitchen roll is used to try and cover the 'mess'.

Understandably the persons whose gardens, driveways and grass verges are used are becoming increasingly annoyed at having to clear up the 'mess' and rightly so. How would you feel if this was your garden, driveway or verge?

Police are now taking positive action to try and locate the culprit responsible and will use all methods available to us to assist in this goal. West Lindsey District Council's Community Safety Unit is also aware and will also use their own methods in conjunction with Police to locate and then deal with the culprit when caught.

If you enter onto anyone's property without permission this is civil trespass and civil action can be taken. There are also potentially offences of littering, public order and/or harassment to consider from a criminal point of view.

If **ANYONE** has **ANY** information that will assist in identifying the culprit or knows the culprit then please contact one of the Nettleham Neighbourhood Policing Team. If you wish to pass information anonymously this can be done via Crimestoppers on 0800 555 111

As for the last few months there is nothing of significant note to inform you for the village. Although it is the Summer Holidays we have been fortunate to date and not had too many reports of Anti Social Behaviour, however evening patrols continue to be conducted in areas of note.



Only call the Team on their mobiles or in the office if it is a follow up call or to pass non incident information. If the Team member is off duty or busy you will be diverted to an answerphone, and it could be 24 hours before your message is heard. And if the line you are calling from is not good, not all the message may be left. If you are wishing to report an incident I'm sure you would be unhappy if no one got back to you for 24 hours. So 999 or for non urgent, 101 for incident reporting no matter how trivial.

Email the team on: [nettleham.npt@lincs.pnn.police.uk](mailto:nettleham.npt@lincs.pnn.police.uk)

Pc 277 Donnah Thompson – mobile 07939 312757  
Pc 440 David Morgan – mobile 07986 998052  
Pcso Jackie Parker - mobile 07944 776801  
Pcso Ross Payne - mobile 07833 143606  
Crime Stoppers - 0800 555 111  
WLDC - 01427 676676

\*\*\*\*\*

Our flu campaign will commence on 29 September 2012. Following the success of our Saturday morning flu clinics, we shall again be running our flu clinics on various Saturday mornings throughout October at both Nettleham and Cherry Willingham surgeries. We will be providing limited Thursday evening clinics at Nettleham for those patients who genuinely can not attend on a Saturday. Vaccination is available for patients who fit one of the criteria listed below:

Aged 65 or over	Have Chronic Heart Disease
Have Chronic Respiratory Disease (including Asthma when regularly using an inhaled steroid)	
Have Chronic Liver Disease	Have Chronic Renal Disease
Have Diabetes	Have Suppressed Immune Systems
Are a Carer	Have Multiple Sclerosis
Currently pregnant	

Please contact the surgery to book an appointment in one of the flu clinics.

**There is no need to wait until you receive a letter. If you fit into one of the criteria listed above, please contact the surgery to make an appointment.**

~~~~~



It's your child's home away from home.

Professional Home-from-Home Childcare  
In Fiskerton since 2005

**Offering quality, reliable child care, in a homely environment, educating your child through active learning.**

Flexible care for 0-11 year olds.

Full & Part Time places available

Occasional days - Holiday Cover - Before/ After School

**For more information or chat call Fiona Smith**  
**01522 750877 or 07748997290**

An Ofsted Registered Childcare Provider

## DELUXE PATIOS

## Patios, Decking and Fencing

**MR JAMES THOMPSON**

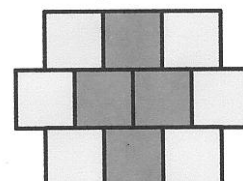
## Design and Installation

£50 cash back on all completed referrals

No limit on number of referrals

01522 534393

07534916647





## **What's On in September:      *In The Area.....***

### **SATURDAY 1<sup>ST</sup>. SEPTEMBER**

Ladies come and enjoy a full English breakfast at '**Rosie Lea Café**', **Cherry Willingham** on the first Saturday of each month.

We meet **at 8.45am for 9.00am** and after enjoying our breakfast, we sit back and listen to an interesting, short talk from a Christian speaker – **all for £5.20**.

Ladies going from Fiskerton can provide you with a lift so book your places by ringing **Jan 01522 753432 or Ann 01522 800209**.

### **COFFEE MORNING:**



The Charity and Fairtrade Coffee Mornings will take place in Cherry Willingham Church Hall on **Saturday September 8th**. from 10am – 11.30am.

All proceeds from the refreshments and raffle go to a chosen charity.

*The Fairtrade Stall will be available for groceries and gifts and to order Christmas Cards.*

CANCER RESEARCH UK



My family and friends are holding a **Bacon Buttie and Coffee Morning** at **Reepham Chapel Schoolroom** on **Saturday September 15<sup>th</sup>**. from 10.30am – 2pm.

If anyone would like to help by contributing cakes or tombola items in memory of a loved one, it would be received most gratefully. We would also like you to come along and support as the sooner answers can be found to this illness, then the better for us all. **Many thanks, Val Hall (01522 752809)**

(Please Note: There will not be a Traidcraft Stall on this occasion)

### **Reepham Friendship Club:**

The Friendship Club has been running in the village for many years and has brought friendship, fun and fellowship to many. Thank you to all who have helped in the running of the club. Your time and effort has been appreciated.

The numbers in the Club have fallen recently due to illness and frailty and those attending are not able to run the Club for themselves any longer. So from September, the Club will be run by the Methodist Church.

Anyone and everyone is welcome to come along. We shall meet (as before) once a fortnight on Wednesday afternoons 2-4pm in the Chapel Schoolroom starting on September 5<sup>th</sup>. We shall have the usual games of bingo and dominoes, a raffle, cup of tea and biscuit but if anyone fancies a different game e.g. whist or scrabble or any other game, please let me know and come along and join us.

I look forward to seeing you there. Jane Wills tel. 752072

+++++

### **SUNDAY 30<sup>TH</sup> SEPTEMBER**

**11 AM – 4.30 PM**

Thinking of getting married in church? Then come along to a.....

### **WEDDING FAIR**

At St Peter and St Paul Church; Cherry Willingham

*Brides of Bailgate*



*Kerricraft Cakes*



*John Turner Photography*

A display of wedding dresses, flowers, cakes and photography and an

*FLOWERS by Design of Nettleham*

**opportunity to talk about getting married in church.**

## **Nettleham Medical Practice And Cherry Willingham Branch Surgery**

### **New Clinical Computer System**

We have now been working with our new clinical system for just over a month. Despite a few teething problems, the migration went very well and we now have everything up and running again. We would like to say thank you to all patients for your patience and tolerance as we learned the new system during the first few days after migration.

For those patients who are registered to use our online services, such as booking appointments, updating registration details or ordering repeat medication, your passwords have all been transferred over to the new system. We would remind you to access the new SystmOnline login page though from the link on our website and delete any links to the old EMISAccess web address.

If you are not currently registered to use our online facility, you can register for this by calling in at the dispensary with some photographic ID. The dispenser will take a copy of the ID and ask you to return in a couple of days to collect your unique user details and PIN number.

### **Midwife Award**

We are delighted to announce that our midwife, Miriam Hunt has recently received a Commendation from the NCT (National Childbirth Trust) for her support to women and their families empowering them in their choice of birth. Miriam was nominated by several of her patients at the practice. Well done Miriam!

### **Monthly Early Closures for Training 2012**

In order to enable our doctors and staff to be kept up to date Nettleham surgery will be closed for training at 1pm on the following afternoons. Emergency help is still available by calling 111.

Tuesday 18<sup>th</sup> September

Tuesday 16<sup>th</sup> October

Tuesday 20<sup>th</sup> November

Tuesday 18<sup>th</sup> December

Contact Details – Nettleham 01522 751717

When the surgery is closed ring freephone 111

Website – [www.nettlehammedical.co.uk](http://www.nettlehammedical.co.uk)

Practice Manager – Helen Lunn

### **Patient Participation group & Voluntary Driver Scheme**

It is still not too late for patients to join our virtual Patient Reference Group. The purpose of this is to have a large group of patients that the practice will contact by email a couple of times each year to ask for their opinion on its services etc.

If you are interested then please complete one of the join up forms at reception or contact Sarah Liron at the practice for more details.

**Meg Rawden – PPG Chairperson**

The voluntary driver's scheme continues to flourish with new patients being added to the list of names each month. Many people often say that they wondered how they coped with getting to the surgeries before the scheme started in March 2009.

We have now been operating for three and a quarter years and hope to continue for many more years to come. None of the drivers are getting any younger and it would be good to get some fresh blood in to become volunteer drivers. At the present moment we have sufficient cover in most of the villages we service but are in need of volunteer drivers in Nettleham. .

If you are interested, please leave your contact details with one of the receptionists at either surgery and I will make contact with you and discuss some of the finer points of the scheme.

**Alan Price – VDS Co-ordinator**

\*\*\*\*\*

### **CHERRY WILLINGHAM COMMUNITY CHOIR**

**Come along and join a friendly bunch of singers**

**The Cherry Willingham Primary School Infant hall**

**7.30-9.00pm**

**Monday 3<sup>rd</sup> and 17th September, 1<sup>st</sup>, 15<sup>th</sup> and 22<sup>nd</sup> of October.**

**We are singing Stand By Me, Sing by Gary Barlow,**

**Be still for the presence of the Lord, California Dreaming, songs by Andrew Lloyd Webber, Beatles,**

**Matt Redman, Michael Ball, Abba, Status Quo, and lots more.**

**For more info please contact:- Jane Mob. 07720050214**

**E-mail [jane.george1@ntlworld.com](mailto:jane.george1@ntlworld.com)**

**Supported by The Vine Community Church**