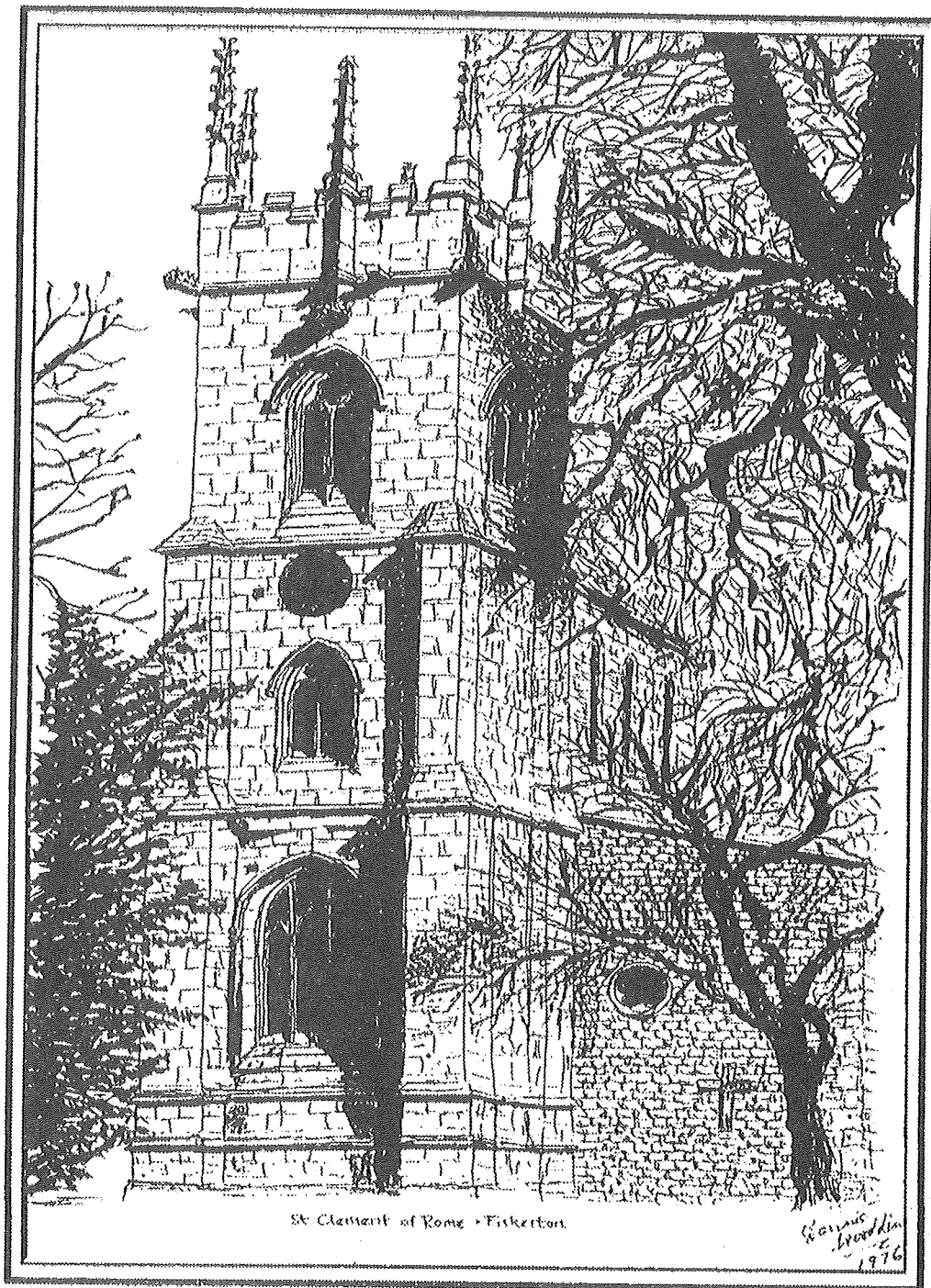


# *Fiskerton Parish News*



*January 2015*

## Vicar's Blog:

It would be remiss of me not to begin this Blog by wishing you all a blessed new year. Just reflecting on the past year, which inevitably had its ups and downs, I do think that it is a real blessing that we don't know 'what is around the corner'. Some people reading this will just be glad to see a new year and make a new start, for others 2014 will have been brilliant, the best year ever. Important then I think to live every day well, as far as we are able.

Someone asked me a question recently - 'do you believe in the power of prayer?' I guess you might think that the answer to that, for me is fairly obvious. I spend quite a lot of time praying one way or another, and I guess I wouldn't do it unless I believed it changes things. It does beg a question though: 'what is prayer?' A lot of people have written a lot of books on the subject, but for me prayer is about practicing the presence of God. It is about being still and listening, about sharing our hearts with God and opening ourselves to His transforming presence. Prayer takes many forms, sometimes it is intercessory - bringing our spoken prayers to God, sometimes it is confessional, sometimes it is about crying out to God, weeping, and at other times it is about laughing in the presence of God, being joyful and thankful. As the Vicar of eight parish churches one of my 'jobs' is to act 'vicariously' on behalf of the people of the parish, that's where the title 'Vicar' comes from, and it means 'to act on behalf of' therefore I am asked to pray on behalf of the people of the parish, and people often ask me to pray for them or for a situation in which they are involved - and I am happy to do that.

Do you believe in the power of prayer? That I think is a good question to ask ourselves at the beginning of a new year, but let it lead to another one - if the answer is yes, how much time do you give to prayer as opposed to, for example, watching TV, reading, shopping etc etc. I am not saying those things are wrong, I am just saying that if we believe in the importance of something, we need to give it time and priority. When it comes to prayer many of us feel inadequate, but God has given us a real privilege, to come into His presence and touch His heart through His Son Jesus, and it is a privilege I believe we should commit ourselves to and explore.

In this year Lincoln Diocese are giving us an opportunity to deepen our own work with God through study and prayer in the Year of Discipleship 2015. It will be launched in our Group on 18<sup>th</sup> January when we gather together with Revd John Leach. Let's make this a year in which we set out our commitment to pray more, study more and deepen our walk with God.

Every Blessing in Christ

Penny

### To arrange Baptisms, Weddings or Funerals please contact:-

Revd. Penny Green (Priest in Charge)	The Vicarage, Church Lane	
	Cherry Willingham	01522 595596
Churchwardens:	Mrs L. Forman	Applegarth, Ferry Road Fiskerton 01526 398316
	Mrs A Townsend	25 St. Clement's Drive Fiskerton 01522 595109
Church Key also available from:	Mrs M Gibson, 14 Ferryside Gardens	01522 752117
Benefice Website:	<a href="http://www.southlawresbenefice.org.uk">www.southlawresbenefice.org.uk</a>	

**SERVICES for the Lawres Group                      JANUARY 2015**

- 4<sup>th</sup>. Epiphany - 2<sup>nd</sup>. Sunday of Christmas**  
 8am Holy Communion at Cherry Willingham  
**9.15am Morning Praise at Fiskerton**  
 10.45am Holy Communion at Greetwell  
 4pm Messy Church at Reepham
- 11<sup>th</sup>. Epiphany 1 - Baptism of Christ**  
 9.15am Morning Praise at Reepham  
**9.15am Holy Communion at Fiskerton**  
 10.45am Holy Communion at Cherry Willingham
- 18<sup>th</sup>. Epiphany 2**  
 10.45am Group Holy Communion at Cherry Willingham with Revd. John Leach \*\*  
 4pm Family Worship at Reepham  
 6.30pm Compline at Cherry Willingham
- 25<sup>th</sup>. Epiphany 3 - Conversion of Paul**  
 8am Holy Communion at Cherry Willingham  
 9.15am Holy Communion at Reepham  
 10.45am Morning Worship at cherry Willingham  
 4pm Messy Church at Fiskerton

**\*\* Please Note: The venue for this service may change**

Holy Communion will be held at Cherry Willingham Church at 9.30am on:-  
 Wed. Jan. 7<sup>th</sup>. 14<sup>th</sup>. 21<sup>st</sup>. 28<sup>th</sup>.

**Service Rota for January**

Jan	Sidesman	Reader	Intercessions	Cleaning
4 <sup>th</sup> .	Gill Walkinton	Carol Proctor 1 John 3: 22 –Ch 4 V6	Lynda Forman Primary School	
11 <sup>th</sup> .	John Fletcher	Paul Forman Acts 19: 1 - 7	CLERGY Hall Lane	Maureen Broad
25 <sup>th</sup> .		Messy	Church	
Feb. 1st.	Gill Walkinton	Sandy Massey	Lynda Forman.	Mary Gibson & Lynda Forman

**SUNDAY JANUARY 25<sup>th</sup>.  
 4pm. St. Clement's Church**



Come and have some fun in Church  
 All parents and children will be very welcome.



The Carpenters Arms  
High Street, Fiskerton, LN3 4HF  
01522 751806

Happy New Year

Guess who is back in the kitchen ..... Dol and Mikel

Come to the Carpenters Arms for a good old fashioned proper home cooked meal. We have freshly cooked pies served with a generous portion of vegetables and a large choice of desserts. Our specials board is updated regularly.

Book your table NOW

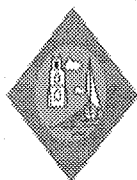
We are also featured in the Camra's Good Beer Guide 2015.

Follow us on Twitter and Facebook

## READY FOR ADVENTURE?

Scouting is open to all young people of every faith and background.

- Try new activities
- Have fun
- Make friends



[fiskertonscouts.org.uk/join](http://fiskertonscouts.org.uk/join)



## Diamond Glazing

*Excellent quality at affordable prices*  
on UPVc Conservatories, Windows, Doors,  
Misted Units, Soffit, Facia & Guttering  
Cladding & Garage Conversions  
Initial call lasts 15 minutes  
We require **NO** signature on initial call.

*Why not visit our showroom where you can see our quality windows, doors, conservatories for yourself.*

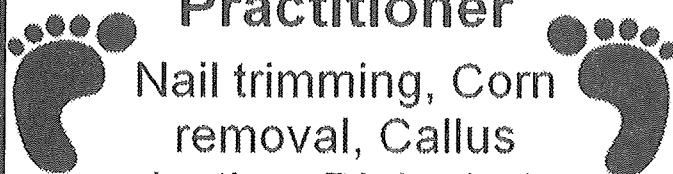
**Showroom - Outer Circle Rd. (next to petrol station)**

For a service you can rely on call 01522 753646

Showroom: 01522 548366

John Nottingham mobile: 07939 558786

## Mobile Foot Health Practitioner



Nail trimming, Corn removal, Callus reduction, Diabetic foot care, Ingrown toenails, Cracked heels, Home visits & more.

Liam Hotchin DipCFHP, MPSPract  
01526 398257 / 07539 610895  
[www.hotchinfoothealth.co.uk](http://www.hotchinfoothealth.co.uk)

## CHERRY WILLINGHAM COMMUNITY CHOIR

Do you enjoy singing?...Yes  
so men and ladies

Come along to

**The Church Hall  
High Street**

**Cherry Willingham  
LN3 4AQ**

**7.30-9.30pm**

**5<sup>th</sup> & 19<sup>th</sup> January 2015**

**Tea & Coffee**

We will be singing a variety of songs including:  
Emmanuel by Chris Tomlin, In the Bleak Mid  
Winter, Jingle Bell Rock + more

For more info please contact  
Jane Mob. 07720050214

E-mail [jane.george1@ntlworld.com](mailto:jane.george1@ntlworld.com)  
Supported by The Vine Community Church

### Other Church News:

#### **'Friend's of St. Clement's Lottery: December 2014 Winners:**

£25: No. 20: Lois Woodthorpe

£ 5: No. 28: John Fletcher

£10: No. 43: Keith Townsend

£ 5: No. 5: Anita Thompson

*Thank you very much to everyone who has supported this lottery over the past year – and in previous years too. Your continued involvement means we can continue to pay our bills and keep the Church in good condition.*

### **A New Year's Resolution.**

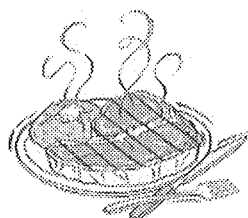
#### **Join the "Friends of Saint Clement's Lottery".**

The cost is £2 per month. For this you have a chance of winning £25, £10, £5 or £5. That is a total of £540 in prizes over the year.

Please send £24 for the year, or £12 for 6 months, to P E Forman, Applegarth, Ferry Road, Fiskerton Lincoln LN3 4HU or Tel: 01526 398316 or email: [pauleforman@btinternet.com](mailto:pauleforman@btinternet.com).

+++++

#### **What's On in JANUARY:      *In The Village.....***



#### **THE LUNCH POT**

Do come and join us for lunch in the Village Hall.

It will only cost you £3. 00 pp

The **January** dates are **Tuesday 6<sup>th</sup>. & 20<sup>th</sup>.**

To Book a place, please call Mary on 595291

### **MOBILE LIBRARY:**

Please note the date and time for the Mobile Library van.

It will be at the Village Hall on **Wednesday January 7<sup>th</sup>. from 3.45pm – 4.15pm.**

#### **Village Hall Bookings for January:**

Monday	5 <sup>th</sup> . 12 <sup>th</sup> . 19 <sup>th</sup> . 26 <sup>th</sup> .	Fiskotots	10am – 11.30am
Monday	12 <sup>th</sup> . 19 <sup>th</sup> . 26 <sup>th</sup> .	After School Activity	3.30pm – 4.30pm
Tuesday	6 <sup>th</sup> . & 20 <sup>th</sup> .	Lunch Pot	10am – 2pm
Tuesday	6 <sup>th</sup> .	Private Hire	6pm – 9pm
Tuesday	13 <sup>th</sup> . 20 <sup>th</sup> . 27 <sup>th</sup> .	Meditation Group	7pm – 9pm
Wednesday	7 <sup>th</sup> . 14 <sup>th</sup> . 21 <sup>st</sup> . 28 <sup>th</sup> .	Dance Classes	2pm – 3pm & 5pm – 7pm
Thursday	1 <sup>st</sup> . 8 <sup>th</sup> . 15 <sup>th</sup> . 22 <sup>nd</sup> . 29 <sup>th</sup> .	Aerobics	9.30am – 10.30am
Friday	2 <sup>nd</sup> . 9 <sup>th</sup> . 16 <sup>th</sup> . 23 <sup>rd</sup> . 30 <sup>th</sup> .	Bingo/Socials	7.30pm – 11.30pm
Saturday	3 <sup>rd</sup> . 17 <sup>th</sup> . 24 <sup>th</sup> . 31 <sup>st</sup> .	Weight Watchers	9.30am – 11.30am
Saturday	3 <sup>rd</sup> .	<b>Party</b>	<b>7pm – 10pm – open to Villagers</b>
Saturday	17 <sup>th</sup> .	Private Hire	3pm – 5pm
Saturday	31 <sup>st</sup> .	Private Hire	2pm – 4pm
Sunday	4 <sup>th</sup> . 11 <sup>th</sup> . 18 <sup>th</sup> . 25 <sup>th</sup> .	Social Evenings	7.30pm – 11.30pm
Sunday	11 <sup>th</sup> .	Private Hire	3pm – 6pm
Sunday	4 <sup>th</sup> . 18 <sup>th</sup> .	The Vine	11am – 1pm
Sunday	18 <sup>th</sup> .	Prospects	2pm – 5pm

To make a booking or check availability please contact Booking Secretary Jenny Hayes on 07510281232

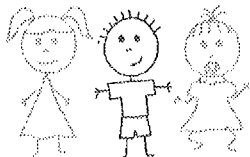
# LoobyLoos Childcare

Outstanding childcare and education for children aged 0-11 years old.

Graded by Ofsted as 'Outstanding' in all areas since 2007

## PROVIDING

- Full/part time day care for 0-5yrs
- Before and after school care
- School Holiday cover
- Emergency cover



Flexible and reliable References available on request

For more information call

01522 753828 / 07825 741723



[www.loobylooschildcare.co.uk](http://www.loobylooschildcare.co.uk)

## Rascals Baby & Toddler Group



Thursday's\* 9.30am – 11.00am

At Cherry Willingham & Reepham Village Hall

Our aim is to provide children aged 0-4 years with an opportunity to socialise and learn through play.

£1.50 for an adult & child then 50p for any extra person.

There are lots of activities provided including messy play, art and singing, plus a healthy snack and drink.

Please call Louise on 01522 753828 for more information

\* There is NO session on the 3rd. Thursday of every month

## CLEARVIEW OPTICIANS

- \* Private and NHS eye tests
- \* Contact lens trials & aftercare
- \* Free Parking
- \* Free\* tests for under 16's & over 60's (\*NHS tests)

Annabelle Magee BSc (Hons) McOptom

169 Burton Road, Lincoln LN1 3LW

Telephone: 01522 542121

[www.clearviewopticians.co.uk](http://www.clearviewopticians.co.uk)

Email: [enquiries@clearviewopticians.co.uk](mailto:enquiries@clearviewopticians.co.uk)

## M.C.H. PLASTERING

INTERNAL & EXTERNAL

FLOOR SCREEDS etc.

40 years experience

Tel: 07801539072



PLUMBING REPAIRS, MAINTENANCE

AND INSTALLATIONS

ALL WORK GUARANTEED & FULLY INSURED

CITY & GUILDS QUALIFIED

NO JOB TOO SMALL

Contact Marc For an Honest Quote

01522 809645 / 07502085899

## THE TYRWHITT ARMS

FERRY ROAD, FISHERTON  
LINCOLN, Lincs LN1 4BQ  
01522 838440

[www.tyrwhittarms.co.uk](http://www.tyrwhittarms.co.uk)

FAMILY RUN PUB SITUATED ON THE BANKS OF THE BARLING'S EAU

- LARGE FAMILY ROOM WITH ARCADE & POOL TABLES
- FULL SIZE SNOOKER TABLE
- RIVERSIDE CONSERVATORY & BEER GARDEN WITH CHILDREN'S PLAY AREA
- COMPREHENSIVE MENU, FRESHLY COOKED USING LOCAL SUPPLIERS
- FRESH FISH & CHIP NIGHT EVERY FRIDAY
- GLUTEN FREE MEALS AVAILABLE
- LUNCHTIME MENU WITH MAIN COURSES FOR £3.99  
AVAILABLE MON-FRI 12pm-3.30pm
- FUNCTION ROOM AVAILABLE FOR PRIVATE BOOKINGS

**FREE Ice Cream Sundae**  
with a purchase of a main meal\*

\*Offer available Mon-Fri 12pm-3.30pm. Excludes alcohol & certain meals. Offer ends 31st Dec 2011. See website for full details. \*Not valid with other offers. © 2011 Tyrwhitt Arms. All rights reserved.

**Church for Life in today's world:  
lively, engaging, informal**

### Sunday Services – January

All services are family and youth-friendly, usually with a vibrant children's programme (Kidzone).

Coffee and cake served from 10.45am

**4<sup>th</sup> 11am at Fiskerton Village Hall – with KidZone**

**11<sup>th</sup> 11am at Reepham & Cherry Willingham Village Hall – with KidZone**

**18<sup>th</sup> 11am at Fiskerton Village Hall – with KidZone**

**25<sup>th</sup> 11am at Reepham & Cherry Willingham Village Hall – with KidZone**

### The Third Thursday Book Club

For women who love to read a good book and talk about it with friends. We read a wide variety of good books. A different one each month. Copies available for you.

**January 15<sup>th</sup>. at 7.30pm**

For further details contact Veronica:  
01522 872011

### The Mix for 11-17 year-olds

**Friday Nights 7pm**

**Lots of different activities**

**Tel 876996 for details**

**Connect groups for all ages,** *providing a social setting for you to connect with people, understand the Bible and grow in faith*

**Adults : Tues 8pm,** Cherry Willingham, **Wed 8pm,** Fiskerton

**Souled Out** – after school on Mondays 3.30-4.30pm - hot dogs, games, life and faith for 11-14year-olds

For other church activities,

[www.thevinecommunitychurch.org.uk](http://www.thevinecommunitychurch.org.uk)

(01522) 872011 (Church Office) The

Vine Community Church Reg. Charity

1142056 is part of the Ground Level

Network of Churches

The Vine Church is linked to a children's home and home for abandoned babies in Kenya, through regular support and short-term work as volunteers in the homes; there is a range of opportunities to get involved in this important work.

### NETTLEHAM MEDICAL PRACTICE

**MISSED APPOINTMENTS:** The practice is experiencing an increased number of appointments, both with doctors and nurses which patients do not attend (DNA). In the last 3 months these lost appointments have equated to 41 ¼ hours of doctor time and 110 hours of nursing time. There is an unprecedented demand for appointments at the moment and it is frustrating that this volume of valuable time is lost.

Whilst the practice recognises that there are times when you are unable to attend a booked appointment, we request that the practice is contacted and the appointment cancelled so that it can be reallocated to another patient.

We are now able to send SMS text reminders to patients to remind them of their appointments. If you would like to receive SMS reminders, please let the receptionist know when booking the appointment and they will be able to activate this for you. We thank you for your help in trying to reduce the number of DNA appts in 2015.

**STAFF CHANGES:** The practice is pleased to welcome Dr Elmer Molave who will be joining as a full time GP early in the New Year.

**SMOKING CESSATION CLINIC:** As it is the time of year when resolutions are made, the practice would like to remind patients that we hold weekly smoking cessation clinics to which you can self-refer. If you are wishing to stop smoking and would like some help, please contact the practice and book an appointment with either Cathy or Vicky who will be happy to work with you in becoming a non-smoker.

**MONTHLY EARLY CLOSURES FOR TRAINING 2015:** In order to enable our doctors and staff to be kept up to date Nettleham surgery will be closed for training at 1pm on the following afternoons. Emergency help is still available by calling 111.

Tuesday 20<sup>th</sup> January 2015      Tuesday 10<sup>th</sup> February 2015      Tuesday 17<sup>th</sup> March 2015

**CONTACT DETAILS:** Telephone - 01522 751717 (When the surgery is closed please ring Freephone 111)

**WEBSITE** – [www.nettlehammedical.co.uk](http://www.nettlehammedical.co.uk) **PRACTICE MANAGER** – HELEN LUNN

# J CURTIS



## PLUMBING & HEATING

206407

ALL ASPECTS OF PLUMBING AND HEATING WORK UNDERTAKEN

General Plumbing Maintenance & Repairs

Boiler Servicing & Repairs

Boiler Replacements

Central Heating Installation & Repairs

Bathroom Installations

Gas Safety Certificates

LPG

For A Professional & Competitive Service Call

Tel: 01522 800058 Mob: 07795 164317



CAROLYN'S

COUNTRY

DOGS

20 years experience

Personal Attention at All times

New purpose built parlour in Reepham

All breeds of small and medium dogs welcome

**GROOMING, BATHING, STYLING**

Call Carolyn for details & Appointments

01522 274914 or 07731006147

Top student, with distinction, 1991 at Caythorpe College



## 2015 DAY TRIPS

Tues 10<sup>th</sup> Feb, Springfields @ Spalding, £10

Tues 24<sup>th</sup> Feb, Downtown @ Grantham, £8

Mon 9<sup>th</sup> March, Brigg Garden Centre, £8

Wed 18<sup>th</sup> March, Marshall Yard & Lunch, £8

Sat 30<sup>th</sup> May, Lord Of The Dance, £52

Sat 30<sup>th</sup> May, The Kings Speech, £47

### PC COACH HOLIDAYS

Sun 11<sup>th</sup> Jan, London Shopper, 2 days from £99

Mon 26<sup>th</sup> Jan, Sussex Coast & Countryside

5 days from £219

Fri 30<sup>th</sup> Jan, The Legendary Joe Loss Orchestra

3 days from £249

**P C Coaches of Lincoln**

Tel 01522 533605

[www.pccoaches.co.uk](http://www.pccoaches.co.uk)

## CHRIS ROOKE MANAGEMENT LIMITED

For a Personal Accountancy, Taxation  
and Business Advice Service

- \* Self assessment tax returns
- \* Accounts preparation and filing
- \* Payroll - weekly or monthly calculations
- \* VAT returns
- \* Cashflow forecasts
- \* Book-keeping services
- \* SAGE and other computerised accounts work
- \* Business start-up's and incorporations

**A prompt and reliable service**

for all your accountancy needs whether a sole trader,  
partnership or limited company

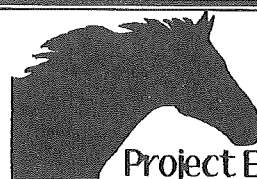
For further information contact Chris on

(01522) 543500 or 07743 687606

E-mail: [chris@chrisrookemanagement.co.uk](mailto:chris@chrisrookemanagement.co.uk)

Greetwell Place, 2 Lime Kiln Way,

Greetwell Road, Lincoln LN2 4US



**Project Equine**

helping you to communicate effectively with your horse

**Horse Issues?**

**Project Equine can help!**

We can help you and your horse to overcome:

Loading issues

Farriery fears

Ridden problems

and other behavioural concerns

**Call Shireen today for a friendly chat**

Mobile: 07948764309

Telephone: 01526 398816

[www.projectequine.co.uk](http://www.projectequine.co.uk)

**What's On in JANUARY:**      *In the Area.....*



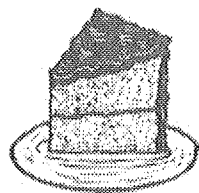
**Ladies come to the  
ROSIE LEA CAFÉ, Cherry Willingham**

for a good breakfast, friendship and chat  
**Saturday 3<sup>rd</sup>, January at 8.45 for 9.00am.**

The Speaker will be Gwen Pollard

Cost: £5.20 - Lifts can be provided.

So come and join us by ringing Jan 753432 or Ann 800209



**Charity Coffee Morning at Cherry Willingham Church Hall**  
**from 10am – 11.30am on Saturday January 10<sup>th</sup>.**

This monthly coffee morning is always well supported and all profits go to charity.  
So come along and enjoy coffee, cake and the opportunity to purchase Fairly Traded items from the Traidcraft Stall.

**Charity Coffee Morning at Reepham Methodist Chapel Hall**  
**from 10am – 11.30am on Saturday January 17<sup>th</sup>.**

Come along for delicious coffee and cake, meet up with friends  
and give your support.

There will be a Traidcraft Stall for groceries.



**Men2gether**

**A lot more than just a Men's Breakfast**

Interested in Friendship, good food, good conversation and a warm welcome?  
Come and join us for our next breakfast, which is on **Saturday January 17<sup>th</sup>**

Where? **Rosie Lea Café, The Parade, Cherry Willingham.**

Time? **8.30am for 8.45 start; Finish approx. 9.45am**

After breakfast, usually a Christian speaker will share a lifetime experience.

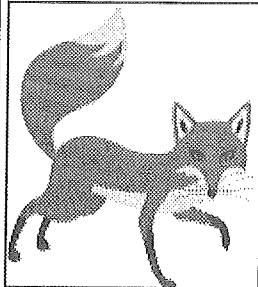
January's speaker will be Rev. Alan Swann

Cost- normally **£5.20** payable when you arrive.

**SPECIAL OFFER – YOUR FIRST BREAKFAST WITH US IS FREE!!!**

To book a place, or places, please email David Burrows,  
david@theburrows.net, or telephone 01522824836  
by the preceding Wednesday

**NEWSLETTER INFORMATION:** If you wish to place items in **Fiskerton Newsletter**, they MUST be with the editor before 19<sup>th</sup>. of the month. Items can be handed in at Wishing Well Stores, or they can be posted to Mrs L. Forman, 'Applegarth', Ferry Rd. Fiskerton, Lincoln LN3 4HU TEL: 01526 398316. You can also e-mail items to [fiskertonnews@btinternet.com](mailto:fiskertonnews@btinternet.com)



## FOX & HOUNDS, REEPHAM

### What's on in JANUARY

New years Eve: - Party – Disco & free buffet for all

Sat 3<sup>rd</sup> Jan - Lincs Fryer Fish & Chips from 5pm. Eat in or takeaway.

Wed 21<sup>st</sup> Jan - Acoustic Unplugged...Play or listen.

Sat 24<sup>th</sup> Jan - The Big Annual Charity Quiz.

Please call for details and to book a table

Chigaco Town 12" stuffed crust pizzas to eat in or take out – just £6.95

Go to [www.foxandhoundsreepham.co.uk](http://www.foxandhoundsreepham.co.uk) for more info

Quiz every Thursday and the last Sunday of the month from 8.30pm

Tel 01522 595191 or 07900465352 to book or email [hello@foxandhoundsreepham.co.uk](mailto:hello@foxandhoundsreepham.co.uk)

## SHORTFERRY ANGLING

FERRY ROAD, FISKEYTON  
LINCOLN, LN3 4HU  
(01522) 399998  
[www.shortferryangling.com](http://www.shortferryangling.com)

### OPENING HOURS

MONDAY: 9am-1pm & 2pm-5pm

TUESDAY: 9am-1pm & 2pm-5pm

WEDNESDAY: 9am-1pm & 2pm-5pm

THURSDAY: 9am-1pm & 4pm-9pm

FRIDAY: 9am-1pm & 2pm-6pm

SATURDAY: 9am-5pm

SUNDAY: 9am-5pm

**FRESH BAIT ALWAYS AVAILABLE**

### LOYALTY CARD SCHEME

**EARN POINTS & RECEIVE SPECIAL OFFERS**

**TUESDAY: OVER 60s CLUB - 10% DISCOUNT**

## Larry Jackson

Domestic appliance repairs/service  
formerly Hotpoint/Creda engineer with  
29 years service

• Fast, Friendly Service

• No Call-out charge

• Repairs to most leading makes of.....

Washers, Dishwashers, Cookers

Refrigeration, Tumble Driers

Tel: 01526 398101

mobile: 07957861306

## ALL ASPECTS OF PROPERTY REPAIRS & IMPROVEMENTS



## EMERGENCY CALL OUT SERVICE

### ▶ COMPLETE BATHROOM SERVICES

Baths, Showers, En-suites.  
Floor & Wall Tiling.  
Ventilation.

### ▶ PLUMBING SERVICES

New Boilers & Radiators.  
New Taps & Repairs.

### ▶ ELECTRICAL SERVICES

Extra Sockets & Lights.  
Security Lighting.

### ▶ FLOORING & JOINERY SERVICES

Hardwood & Laminate Flooring.  
New Doors & Locks.  
Self Assembly Unit Fitting.

### ▶ EXTERIOR SERVICES

Block Paving Paths & Driveways.  
Fencing.  
Paving & Patios.  
Decking.  
Gutter Cleaned Out & Repaired.  
Replacement Glazing.

**PREMIER**  
- PROPERTY SERVICES -



"If in doubt, ask. We have someone that can."

✓ 07897 480 404 - Lester Tyler

✓ 07743 315 756 - Stuart Beckett