

### **Vicar's Blog:**

Children in our schools often ask me what Vicars do. That's actually quite a difficult question to answer, because I guess that some of what any Vicar does is hidden behind the scenes. So, I thought I would give you a 'day in the life' taken from my October diary..... with a few asides....

6.30am ish (!) drink tea and do my daily reflection – a chance to start the day well with prayer and a short bible reading. Nothing formal – am currently being challenged by readings in the book of Acts – it was all go in the early church! I would like you to think that I manage the 6.30am challenge everyday – but if I manage it 4 days a week I am doing well; and as an aside I can't get out of the house without having at least two mugs of tea in the morning! I am not really a morning person, but frankly I am beginning to realise that I am not a night person either!

7.00am Cats have just leapt on me – this means they want feeding and will sit and stare at me until they get fed – I can't bear the tension so give in immediately, particularly as Mindy is sitting about two inches away from my nose. I never saw myself as a cat person – but Mork and Mindy are great fun and generally wear the trousers in the house (a colloquial expression which indicates that they are in charge)

8.00am Meet Revd Chris in Cherry Willingham Church for Morning Prayer. This is the formal Daily Prayer that all Church of England Priests commit to praying everyday. It's part of the ongoing cycle of Christian prayer that travels round the world everyday. I am always taken by that thought that there is someone praying every moment of every day somewhere in the world.

8.45am Some phone calls to make and paperwork to do (which I am not very good at). Funeral Director rings to arrange a funeral for the week after. I am not free – need to find someone that is – takes a few minutes; phone rings again – a 'tip off' that someone from one of the churches is unwell – promise to go and visit; another phone call – could I please remember to send a baptism form out that I promised two weeks ago (confirming that I am not very good at paperwork!)

By this time my day is not turning out in the direction that I had anticipated. In about 20 minutes I need to be in a meeting with some clergy colleagues in another village that's about half an hour away. I am going to be late – ring, and be even later or just be late – I opt for the latter and risk the wrath of the person conducting the meeting..... when I got there he was even later than I was!!

Back just after lunch-time. Next stop Fiskerton School Reception children are visiting church. I love spending time with the children. They are sometimes funny, sometimes very perceptive, always good to be with and very honest. I was in another school recently with some slightly older children who had compiled some questions for me, the first of which was: 'Revd Penny, when are you going to retire?' .... and here's me still thinking I was 21... that one must have slipped past the teacher because she looked so embarrassed – frankly it just made me laugh! The children from Fiskerton ask questions like: 'where in the church do I sleep?'; 'who is my boss?' 'what does a Vicar do?'. I try to answer as honestly as I can trying to convey the message that I don't actually live in the church building. The children look round the church familiarising themselves with their surroundings. The one thing that the children are always impressed with is the size of the church key – not for the fainthearted!! One hour with them gets my creative juices flowing ..... home – had an idea for Messy Church on Sunday – just need to get that on paper otherwise it will leave my brain never to return.

It's tea time – quick bite to eat. Evening Prayer to say (very quickly), blog to write, cats need feeding again (this happens with monotonous regularity). Switch on TV for news. Meeting at 7pm – Ministry Team gathering, switch on TV, football and not very good football at that ... Zebedee really did say it's time for bed..... that was until half an hour later Mork leapt on the bed – just a gentle reminder that I had forgotten to fill their bowls ..... here we go again!

Most days I love being a Vicar.... Every blessing Penny

**SERVICES for the Lawres Group****JANUARY 2016****3<sup>rd</sup>. 2<sup>nd</sup>. Sunday of Christmas - Epiphany**

8am Holy Communion at Cherry Willingham

**9.15am Morning Praise at Fiskerton**

10.45am Holy Communion at Greetwell

4pm Messy Church at Reepham

**10<sup>th</sup>. Epiphany 1 – Baptism of Christ****9.15am Holy Communion at Fiskerton**

9.15am Epiphany Praise at Reepham

10.45am Holy Communion at Cherry Willingham

**17<sup>th</sup>. Epiphany 2****9.15am Holy Communion at Fiskerton**

10.45am Holy Communion at Cherry Willingham

4pm Family Worship at Reepham

6.30pm Compline at Cherry Willingham

**24<sup>th</sup>. Epiphany 3**

8am Holy Communion at Cherry Willingham

9.15am Holy Communion at Reepham

10.45am Epiphany Praise at Cherry Willingham

**4pm Messy Church at Fiskerton****31<sup>st</sup>. Epiphany 4**

10am Benefice Communion at Cherry Willingham

Holy Communion will be held at Cherry Willingham Church at 9.30am on:-

Wednesday **January 6<sup>th</sup>. 13<sup>th</sup>. 20<sup>th</sup>. 27<sup>th</sup>.**

<b>Jan. ROTA</b>	<b>Sidesman</b>	<b>Reader</b>	<b>. Intercessions</b>	<b>Cleaning</b>
<b>3<sup>rd</sup>.</b>	Gill Walkinton	Sandy Massey Eph. 3: 1-12	Annette Townsend Churchview Cresc.	
<b>10<sup>th</sup></b>	John Fletcher	Annette Townsend Acts 8: 14 - 17	CLERGY Shortferry Community	Carol Proctor & Sandy Massey
<b>17<sup>th</sup>.</b>	Sandy Massey	Carol Proctor 1 Cor 12: 1 - 11	CLERGY The village shop	
<b>24<sup>th</sup>.</b>		Messy	Church	Lynda Forman & Mary Gibson
<i>Feb. 7<sup>th</sup>.</i>	<i>Jean Lunn</i>	<i>Gill Walkinton</i>	<i>Lynda Forman</i>	

**Lawres Group Clergy:**

Vicar: Revd Penny Green

01522 595596

[revdpg@virginmedia.com](mailto:revdpg@virginmedia.com)

Associate Priest: Revd Sue Bradley

Associate Priest: Revd Carol Bason

Assistant Curate: Revd Chris Hewitt

**Church Wardens** Mrs L. Forman

Applegarth, Ferry Road Fiskerton 01526 398316

(Fiskerton) Mrs A Townsend

25 St. Clement's Drive Fiskerton 01522 595109

Church Key also available from:

Mrs M Gibson, 14 Ferryside Gardens 01522 752117

Benefice Website:

[www.southlawresbenefice.org.uk](http://www.southlawresbenefice.org.uk)

**What's On in JANUARY:**      *In The Village.....*

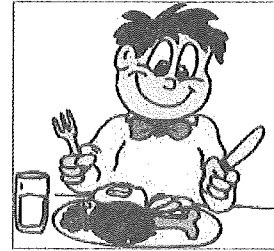
**THE LUNCH POT**

Do come and join us for lunch in the Village Hall.

It will only cost you £3. 00 pp

The dates are **Tuesday January 5<sup>th</sup>. & 19<sup>th</sup>.**

To Book a place, please call Mary on 595291



The next meeting is the Annual Dinner at the Carpenter's Arms. This takes place on January 14<sup>th</sup>. 7pm for 7.30 start. If member wish to attend but have not yet booked, then please contact the Secretary, Iris Taylor. Thank you

**Village Hall Bookings for JANUARY:**

Monday	11 <sup>th</sup> . 18 <sup>th</sup> . 25 <sup>th</sup> .	Fiskertots	10am – 11.30am
Monday	11 <sup>th</sup> . 18 <sup>th</sup> . 25 <sup>th</sup> .	Karate Classes	3.30pm – 4.30pm
Tuesday	5 <sup>th</sup> . 19 <sup>th</sup> .	Lunch Pot	10am – 2pm
Tuesday	12 <sup>th</sup> .	Vill. Hall Comm.	7.30pm
Wednesday	6 <sup>th</sup> . 13 <sup>th</sup> . 20 <sup>th</sup> . 27 <sup>th</sup> .	Dance Classes	2pm – 3pm & 5pm – 7pm
Thursday	7 <sup>th</sup> . 14 <sup>th</sup> . 21 <sup>st</sup> . 28 <sup>th</sup> ..	Aerobics	9.30am – 10.30am
Thursday	7 <sup>th</sup> .	NPG Meeting	7pm – 9pm
Friday	8 <sup>th</sup> . 15 <sup>th</sup> . 22 <sup>nd</sup> . 29 <sup>th</sup> .	Bingo/Social	7.30pm – 11.30pm
Saturday	9 <sup>th</sup> . 16 <sup>th</sup> . 23 <sup>rd</sup> . 30 <sup>th</sup> ..	Weight Watchers	9.30am – 11.30am
Saturday	9 <sup>th</sup> .	Private Party	3pm – 5pm & 7pm – 10pm
Saturday	30 <sup>th</sup> .	Private hire	6pm – 11.30pm
Sunday	17 <sup>th</sup> .	Prospects	2pm – 5pm
Sunday	3 <sup>rd</sup> . 10 <sup>th</sup> . 17 <sup>th</sup> . 24 <sup>th</sup> . 31 <sup>st</sup> .	Social Evenings	7.30pm – 11.30pm

To make a booking or check availability please contact Jenny Hayes on 07510281

\*\*\*\*\*

**A BIG Thank you.....**

To those who came to the concert in St. Clement's on Friday December 11<sup>th</sup>.

'Fusion' wanted you all to know how very delighted they were with the generosity of the audience.

Including the donation from Church, they took away £100 for St. Barnabas Hospice. Wonderful.

*Cherry Willingham library has reopened,  
operated by volunteers from The Vine Community Church*

*Opening hours are:-*

*Thursdays 9.30am to 12.30pm & 3.30pm to 5.30pm*

*Saturdays 10.00am to 12.00noon*

**NEWSLETTER INFORMATION:**

If you wish to place items in **Fiskerton Newsletter**, they **MUST** be with the editor **BEFORE 19<sup>th</sup>. of the month.**

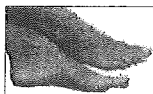
Items can be handed in at Wishing Well Stores, or they can be posted to Mrs L.Forman, 'Applegarth', Ferry Rd. Fiskerton, Lincoln LN3 4HU TEL: 01526 398316.

You can also e-mail items to [fiskertonnews@btinternet.com](mailto:fiskertonnews@btinternet.com)

## Treat Your Feet

Christopher Allen

Dip CFHP MPS pract (FHP) MVR



### Treatments include

- Nail trim & file
- Callus & corn removal
- Verruca treatment
- Ingrowing toenails
- Heel pain
- Fungal conditions

It's easy to neglect your feet.

Why keep putting it off?

The solution is simple-

**TREAT YOUR FEET!**



Evening and weekend appointments

Tel: 07917 532296

Email: [chrisallenredleas@yahoo.co.uk](mailto:chrisallenredleas@yahoo.co.uk)

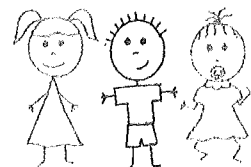
## Looby Loos Childcare

Outstanding childcare and education for children aged 0-11 years old.

Graded by Ofsted as 'Outstanding' in all areas since 2007

### PROVIDING

- Full/part time day care for 0-5yrs
- Before and after school care
- School Holiday cover
- Emergency cover



Flexible and reliable References available on request

For more information call

01522 753828 / 07825 741723



[www.loobylooschildcare.co.uk](http://www.loobylooschildcare.co.uk)

## SHORTFERRY ANGLING

FERRY ROAD, FISHERTON  
LINCOLN, LN3 4NU

01522 938888

[www.shortferryangling.com](http://www.shortferryangling.com)

### OPENING HOURS

MONDAY: 9am-1pm & 2pm-5pm

TUESDAY: 9am-1pm & 2pm-5pm

WEDNESDAY: 9am-1pm & 2pm-5pm

THURSDAY: 9am-1pm & 4pm-9pm

FRIDAY: 9am-1pm & 2pm-6pm

SATURDAY: 9am-5pm

SUNDAY: 9am-5pm

**FRESH BAIT ALWAYS AVAILABLE**

LOYALTY CARD SCHEME

**EARLY BOOKINGS & RECEIVE SPECIAL OFFERS**

**TUESDAY: OVER 60% CLUB - 10% DISCOUNT**

## Larry Jackson

Domestic appliance repairs/service

formerly Hotpoint/Creda engineer with

30 years service

• Fast, Friendly Service

• No Call-out charge

• Repairs to most leading makes of.....

Washers, Dishwashers, Cookers

Refrigeration, Tumble Driers

Tel: 01526 398101

mobile: 07957861306

ALL ASPECTS OF PROPERTY  
REPAIRS & IMPROVEMENTS



EMERGENCY  
CALL OUT SERVICE

### ► COMPLETE BATHROOM SERVICES

Baths, Showers, En-suites.  
Floor & Wall Tiling.  
Ventilation.

### ► PLUMBING SERVICES

New Boilers & Radiators.  
New Taps & Repairs.

### ► ELECTRICAL SERVICES

Extra Sockets & Lights.  
Security Lighting.

### ► FLOORING & JOINERY SERVICES

Hardwood & Laminate Flooring.  
New Doors & Locks.  
Self Assembly Unit Fitting.

### ► EXTERIOR SERVICES

Block Paving Paths & Driveways.  
Fencing.  
Paving & Patios.  
Decking.  
Gutter Cleaned Out & Repaired.  
Replacement Glazing.



**PREMIER**  
PROPERTY SERVICES

"If in doubt, ask. We have someone that can."

✓ 07897 480 404 - Lester Tyler

✓ 07743 315 756 - Stuart Beckett

**What's On in JANUARY In the Area.....**



Incorporating Cherry Willingham Library

***Church for Life in today's world: lively, engaging, informal***

**Sunday Services – January**

All services are family and youth-friendly, usually with a vibrant children's programme (Kidzone).  
All our services are now held in The Vine Centre, The Parade, Cherry Willingham (the Library building)

Coffee and cake are served from 10.45am and services start at 11.00 am

The Vine Church is linked to a children's home and home for abandoned babies in Kenya, through regular support and short-term work as volunteers in the homes; there is a range of opportunities to get involved in this important work

**Connect groups for all ages**, *providing a social setting for you to connect with people, understand the Bible and grow in faith*

**Adults : Tues 8pm**, Cherry Willingham, **Wed 8pm**, Fiskerton **Souled Out** – after school on Mondays 3.30-4.30pm - hot dogs, games, life and faith for 11-14-year-olds

For other church activities see  
[www.thevinecommunitychurch.org.uk](http://www.thevinecommunitychurch.org.uk)  
Or phone (01522) 872011 (Church Office) The Vine  
Community Church Reg. Charity 1142056 is part of the Ground  
Level Network of Churches

**The Mix for 11-17 year-olds**  
**Friday Nights 7pm** Lots of  
**different activities Tel 876996**  
**for details**

**The Third Thursday Book Club**  
*For women who love to read a good book, and talk about it with friends! It's on the third Thursday every month. You'll enjoy it, and meet new friends. We read a wide variety of great books, a different one each month. Free copies available*

Thursday January 21<sup>st</sup>. 7.30pm  
**Tel : Veronica on 872011**

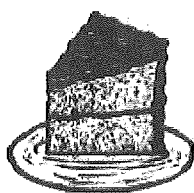


**Ladies come to the**  
**ROSIE LEA CAFÉ, Cherry Willingham**  
for a good breakfast, friendship and conversation  
**Saturday January 9th. 8.45 for 9.00am.**



Listen to a Christian speaker – this month's speaker is Joan Bennett (Community Larder)  
Cost: £5.20 - Lifts can be provided.

So come and join us by ringing Jan 753432 or Ann 800209



**Charity Coffee Morning at Cherry Willingham Church Hall**  
**from 10am – 11.30am on Saturday 9<sup>th</sup>. January**

This monthly coffee morning is always well supported and all profits go to charity. So please come along and enjoy coffee, cake and the opportunity to chat with friends old and new.

# J CURTIS



## PLUMBING & HEATING

206407

ALL ASPECTS OF PLUMBING AND HEATING WORK UNDERTAKEN

**General Plumbing Maintenance & Repairs**

**Boiler Servicing & Repairs**

**Boiler Replacements**

**Central Heating Installation & Repairs**

**Bathroom Installations**

**Gas Safety Certificates**

**LPG**

*For A Professional & Competitive Service Call*

**Tel: 01522 800058 Mob: 07795 164317**



*CAROLYN'S*



*COUNTRY*

*DOGS*

20 years experience

*Personal Attention at All times*

**New purpose built parlour in Reepham**

*All breeds of small and medium dogs welcome*

**GROOMING, BATHING, STYLING**

**Call Carolyn for details & Appointments**

**01522 274914 or 07731006147**

*Top student, with distinction, 1991 at Caythorpe College*

### DAY TRIPS

Wed 23<sup>rd</sup> Dec, Thursford Christmas Show, £52

Wed. 6<sup>th</sup>. April, Cambridge, £22

Thurs 21<sup>st</sup> April, Riverdance, £49

Thurs 16<sup>th</sup> June, Mamma Mia Tour, £49

Sat 13<sup>th</sup> August, Festival of Quilts, £38

**2016 Day trips Brochure out now!!**

### COACH HOLIDAYS

Sat 16<sup>th</sup> Jan. London Shopper, 2 days from £85

Fri 12<sup>th</sup> Feb. 3-star Mystery Tour, 4 days from £185

Fri 19<sup>th</sup> Feb. North Wales, Chester and the  
Snowdrops, 4 days from £169

Fri 26<sup>th</sup> Feb. Chester, Liverpool & Salford Quays,  
3 days from £129

**PC Coaches of Lincoln**

**Tel 01522 533605**

**[www.pccoaches.co.uk](http://www.pccoaches.co.uk)**

### CHRIS ROOKE MANAGEMENT LIMITED

**For a Personal Accountancy, Taxation  
and Business Advice Service**

- \* Self assessment tax returns
- \* Accounts preparation and filing
- \* Payroll - weekly or monthly calculations
- \* VAT returns
- \* Cashflow forecasts
- \* Book-keeping services
- \* SAGE and other computerised accounts work
- \* Business start-up's and incorporations

**A prompt and reliable service**

**for all your accountancy needs whether a sole trader,  
partnership or limited company**

For further information contact Chris on  
(01522) 543500 or 07743 687606

E-mail: [chris@chrisrookemanagement.co.uk](mailto:chris@chrisrookemanagement.co.uk)

Greetwell Place, 2 Lime Kiln Way,  
Greetwell Road, Lincoln LN2 4US



**Project Equine**

*helping you to communicate effectively with your horse*

**Horse Issues?**

**Project Equine can help!**

**We can help you and your horse to overcome:**

**Loading issues**

**Farriery fears**

**Ridden problems**

**and other behavioural concerns**

**Call Shireen today for a friendly chat**

**Mobile: 07948764309**

**Telephone: 01526 398816**

**[www.projectequine.co.uk](http://www.projectequine.co.uk)**

**Chris Darcel, Independent District Councillor for the Cherry Willingham Ward.**

Tel 01522 750411, email [chris.darcel1@gmail.com](mailto:chris.darcel1@gmail.com) or just knock on the door.3 Holmfield, Fiskerton.

***PLEASE NOTE:** The opinions expressed in the following piece are the personal views of Councillor Darcel and do not necessarily represent the views of other local officers and organizations.*

I did try to write a "letter from America" last month but the "post" did not get as far as Fiskerton.

Pat and I enjoyed a very exciting time with our eldest daughter and we saw much in California and LA that could be usefully employed in West Lindsey, of which several ideas I have been campaigning for in west Lindsey and for which I would be most grateful for some help.

These include **Green open spaces**, community allotments, city farms and purpose designed recreation areas. They do exist already, there are examples in Lincoln, Cambridge and lots of other cities, and in the US, urban and vertical gardens are the flavour of the month. Why?

To use an extract from the Oxford Green Spaces Strategy 2013

"These green spaces support the local economy having a significant impact on the economic life of an urban centre; they greatly add to people's satisfaction with their local area and help to bring communities together.

They act as the city's lungs and are crucial for maintaining and improving people's health and well-being. Evidence shows a brisk walk every day, in a local green space, can reduce the risk of heart attacks, strokes and diabetes by 50%, fracture of the femur, colon and breast cancer by 30% and Alzheimer's by 25%.

Add to this the positive impact of exposure to nature and green space on stress and mental health and the full picture in relation to health and well-being can start to be understood."

But even this fails to mention the social benefits that are too numerous to mention here.

Which brings me on to the **Neighbourhood Plan**. As Councillor Wall, the NPG chairman, mentioned last month, the NPG is still waiting for several reports that are looking at the areas proposed in last year's consultation document. Once these reports are in, as Rob said, consultation can then take place.

Hopefully we will be able to plan in some, if not all, of the above green spaces mentioned above, and as a resident on the Holmfield Estate, who will be little affected by any development; I believe more weight should be given to the opinions of those whose properties will be adjacent to future development than those living further away.

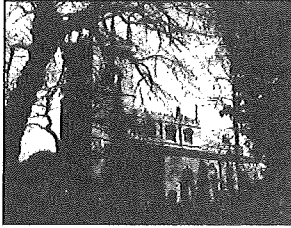
#### **The East Midlands Council Plan for Connectivity.**

At a presentation for EMC members, 10<sup>th</sup> December, plans for improving transport links across the region were unveiled. These include a "hub" at Toton, between Nottingham and Derby, for a HSR2 transport interchange. It could be 20 years before the plans bear fruition and guess what! Nothing worthwhile for Lincolnshire was mentioned. If you want to get to Toton you would need to leave a week early!

Lastly, I was delighted to be asked to attend **The Cherry School Senior Awards Evening**. The school is rightly proud of a number of some really high achievers. When I suggested "it is a pity you don't have a Sixth Form" where these, the students, would take a shining lead, I expected half of the reply but not the full story. Yes the school is too small today for a Sixth form but if the Joint Local Plan is looking to a population increase of 70,000 across the three districts, in a few years time it will be turning away students. The other half of the answer, which really upset me was that local schools that do have Sixth forms are suffering a funding crisis. I benefitted from an excellent state provided education. Money would have featured in the equation but 60 years ago the importance of education was understood. Today education for young people is even more important. So what are our politicians up to?

A Very Happy New Year.

## 'Friends of St. Clement's Lottery: December 2015 Winners



£25	No: 3	Mr & Mrs A Pritchard
£10	No: 22	M. Dunkling
£5	No: 47	Mr A Hobbins
£5	No: 2	Lynda Forman

### **If you would like to join the "Friends of Saint Clement's Lottery".**

The cost is £2 per month. For this you have a chance of winning £25, £10, £5 or £5.

That is a total of £540 in prizes over the year.

Please contact P E Forman, Applegarth, Ferry Road, Fiskerton Lincoln LN3 4HU or Tel: 01526 398316 or email: [pauleforman@btinternet.com](mailto:pauleforman@btinternet.com). For further information.

+++++



### **Drive down your winter energy bills with Lincolnshire Energy Switch Scheme**

The latest opportunity to join the scheme starts today that could bring you hundreds of pounds of savings – freeing up extra cash that will help towards the cost of Christmas - or to put towards improvements for your home next year.

In a recent auction the average saving per household to take up their offer was a huge £230 – and 98 per cent of those who registered were able to make a saving.

It's quick and easy to register at [www.West-Lindsey.gov.uk/switch](http://www.West-Lindsey.gov.uk/switch) or if you do not have internet access, a friend or family member can do this on your behalf.

Alternatively call the free phone number 0800 048 8439. The registration number is open 8am to 5.30pm Monday to Friday.

Once households have registered their interest, the energy suppliers will be invited to compete with their best offers.

The scheme is free for households to join and there is no obligation to take up the winning supplier's tariff offer.

All can register, whether you rent your home or own it, whether you are on dual fuel, electric only, pay monthly or quarterly or have a prepayment meter.

Households are again invited to register for the scheme, organised by Lincolnshire County Council, South Kesteven District Council, West Lindsey District Council, East Lindsey District Council, North Kesteven District Council, Lincoln City Council and administered by the UK's leading collective switching expert, iChoosr Ltd.

Lead officer for the councils Karen Lond said: "Shopping around for a good deal on energy bills has never been more popular and understandably we all seek to make savings that can add up.

"Registering online or calling the freephone number is a simple solution to what can be a time consuming process of changing energy provider.

"Therefore we recommend residents choose this hassle free option which has no obligation. If you register you are offered a deal after the auction and it's a simple choice then whether to take it or not.

"The more people who register, the more interested energy suppliers are securing them as customers and the better the deal they offer."



### **Men2gether : A lot more than just a Men's Breakfast**

Interested in Friendship, good food, good conversation and a warm welcome? Come and join us for our next breakfast, which is on **Saturday January 16<sup>th</sup>**. Where? **Rosie Lea Café**, The Parade, Cherry Willingham. Time? **8.30am for 8.45 start**; Finish approx. 9.45am After breakfast, usually a Christian speaker will share a lifetime experience. **THIS MONTH: Dave Podbury**

**Cost- normally £5.20** payable when you arrive.

**SPECIAL OFFER – YOUR FIRST BREAKFAST WITH US IS FREE!!!** To book a place, or places, please email David Burrows, [david@theburrows.net](mailto:david@theburrows.net), or telephone 01522-824936 by the preceding Wednesday

+++++

### **POLICE NEWS:**

Nettleham Neighbourhood Policing Team, Police Station, Scothern Lane, Nettleham LN2 2TU

E.mail [nettleham.npt@lincs.pnn.police.uk](mailto:nettleham.npt@lincs.pnn.police.uk) [twitter.com@npt-nettleham](https://twitter.com/npt-nettleham)

Call your LOCAL Police: 101 Only in an EMERGENCY call 999

**Pegasus is a data base that helps people with disabilities make contact with Lincolnshire Police.**



The database contains details provided by people who have registered with the force because their disability makes it difficult for them to give spoken details when calling the police. When a person registers with Pegasus they are issued with a personal

identification number (PIN) they can use when contacting the police by telephone or in person. On initial contact the person only needs to say Pegasus and their PIN number. The police call handler can then access details from the database relating to that person. This helps to stop the caller having to spend valuable time trying to give personal details. The information on the database will also help the police to understand any barriers to communication and give suitable assistance.

Lincolnshire Police are committed to providing the best possible service to everyone – including people with communication difficulties caused by physical or learning disabilities, and or illness. A database is being piloted by

Lincolnshire Police to make the initial phase of contacting them either by phone or in person – easier.

Registering for the Pegasus scheme is free and the information is held in a secure environment. It is not shared with any other organisation.

Lincolnshire Police would like to make contact with anyone who wished to take part in the pilot scheme.

#### **Who should take part?**

People taking part would need to:

- Have a disability or illness, which may make it hard to communicate with the police in an emergency or a difficult situation.
- Be willing, with support if necessary, to fill in the application form and return it by post or email.

How does Pegasus work?

Once you are signed up to Pegasus you will be issued with a Pegasus Pack. The pack contains instructions providing you with a brief guide how to use Pegasus and a Pegasus card.

The Pegasus card has a number on which is your PIN.

#### **How to use Pegasus**

1. Dial or text to contact Lincolnshire Police
2. Say/type 'Police'
3. Wait for Police operator
4. Say/type 'Pegasus' or 'Peg'
5. Give your PIN Number

**Want to know more or take part?** Tel: 101 Post: Lincolnshire Police PO Box 999 Lincoln LN5 7PH

Email: [mir.fcr@lincs.pnn.police.uk](mailto:mir.fcr@lincs.pnn.police.uk) Fax: 01522 558686



## **M.C.H. PLASTERING**

**INTERNAL & EXTERNAL  
FLOOR SCREEDS etc.**

**42 years experience**

**Tel: 07801539072**

## **Mobile Foot Health Practitioner**

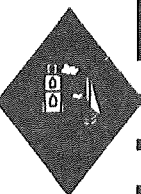
 Nail trimming, Corn removal, Callus reduction, Diabetic foot care, Ingrown toenails, Cracked heels, Home visits & more. 

**Liam Hotchin DipCFHP, MPSPract**  
**01526 398257 / 07539 610895**  
[www.hotchinfoothealth.co.uk](http://www.hotchinfoothealth.co.uk)

**'I LIKED THE CLIMBING WALL  
BECAUSE I MANAGED TO REACH  
THE TOP! EVEN THOUGH MY FEET  
WERE WET I STILL KEPT GOING.  
THE FUNNIEST PART WAS WHEN  
I WAS COMING DOWN, I NEARLY  
KISSED THE WALL!'**

Alex, 9.

Join today:  
[fiskertonscouts.org.uk/join](http://fiskertonscouts.org.uk/join)



## **THE TYRWHITT ARMS**

FERRY ROAD, FISKERTON  
LINCOLN, LN3 4HU  
01526 388483

[www.tyrwhittarms.co.uk](http://www.tyrwhittarms.co.uk)

FAMILY RUN PUB SITUATED ON THE BANKS OF THE DARLINGS EAU

- LARGE FAMILY ROOM WITH ARCADE & POOL TABLES
- FULL SIZE SNOOKER TABLE
- RIVERSIDE CONSERVATORY & BEER GARDEN WITH CHILDREN'S PLAY AREA
- COMPREHENSIVE MENU, FRESHLY COOKED USING LOCAL SUPPLIERS
- FRESH FISH & CHIP NIGHT EVERY FRIDAY
- GLUTEN FREE MEALS AVAILABLE
- FUNCTION ROOM AVAILABLE FOR PRIVATE BOOKINGS
- SUNDAY LUNCH 2 COURSES FOR £9.99
- \*\*\*\*\*NEW UNDER 6 SOFT PLAY AREA\*\*\*\*\*

## **Bowser Brothers**

### **5★ Hog Roast Catering**

(Includes Canapés-salads-Hot potatoes-Desserts)

**Weddings to Corporate Occasions**

**Lunches at Cherry Willingham/  
Reepham Village Hall.....**

**Sunday Feb. 14th. March 20th. April 17th.**  
**12.30 for 1pm**

**To Book:-**[www.bowserbros.com](http://www.bowserbros.com)  
**01673 862423/07767 252209**  
**peterbowser@hotmail.com**

Also:

Luxury Dressed Wedding Reception Barn at  
Stainton By Langworth

## **Diamond Glazing**

*Excellent quality at affordable prices*  
on UPVc Conservatories, Windows, Doors,  
Misted Units, Soffit, Facia & Guttering  
Cladding & Garage Conversions  
Initial call lasts 15 minutes  
We require NO signature on initial call.

(Why not visit our new , BIGGER/BETTER showroom where you  
can see our quality windows, doors, conservatories for yourself?)

**NEW Showroom: Bishop Road, Lincoln LN2 4JZ**  
**(Past Tesco, opposite Jewsons)**

For a service you can rely on call 01522 753646

Showroom: 01522 548366

A FENSA REGISTERED COMPANY